

2/5 Megapixel H.265 Mini Bullet Network Camera



KEY FEATURES

- ◆ **H.265**, optimized in bit rate, bandwidth and storage usage, 50% off than H.264.
- ◆ **Super WDR**, up to 140dB wide dynamic range ensure all the bright and dark areas are well presented.
- ◆ **IP67**, industrial level protection, provides solid stability and durability.
- ◆ **3X AF Lens**, keep the clarity and focus on the correct objects rapidly, always deliver the high-quality image.



IoT INTEGRATION

The camera can be integrated with most common IoT interface such as RS232, RS485, I/O, Relay, Analog Input, provides an all-in-one IoT surveillance solution.



ULTRA-LOW LIGHT DETECTION

The starlight camera will catch all the details even in the no-light environment, the minimum illumination is 0.002Lux, and 0Lux with IR on.



SMART IR LEDs

Industrial level IR LEDs, the distance is up to 50 meters. With the Smart IR technology, the camera can detect everything in any situation.

SPECIFICATION

Model	F-SC311-21	F-SC311-51	F-SC311-25	F-SC311-55
CAMERA				
Image Sensor	1/2.8" Progressive Scan CMOS			
Resolution	2MP	5MP	2MP	5MP
Min. Illumination	Color: 0.002Lux@F1.2	Color: 0.005Lux @F1.2	Color: 0.002Lux@F1.2	Color: 0.005Lux @F1.2
	B/W: 0Lux with IR on			
WDR	Super WDR up to 140dB		Super WDR up to 120dB	
Lens	Fixed Lens		3x Optical AF Motorized Zoom Lens	
	2.8mm @F2.0 / 3.2mm @F2.2 / 3.6mm @F2.2 / 4mm@F2.2 / 6mm @F2.2		2.8~8.4mm @F1.8~F2.7 2.8~8.4mm @F1.8~F2.7	
Mount	M12		Φ14	

Model	F-SC311-21	F-SC311-51	F-SC311-25	F-SC311-55
CAMERA				
Field of View	H123°/D142°/V68°(2.8 mm), H108°/D126°/V59°(3.2 mm), H90°/D105°/V48°(3.6m m)	H113°/D144°/V84°(2.8 mm), H98°/D124°/V73°(3.2m m), H82°/D105°/V60°(3.6m m)	H111°~H48° D130°~D55° V60°~V27°	H101°~H42° D129°~D53° V74°~V31°
Shutter Time	1/100000s~1/5s			
IR Distance	Up to 50m			
Day&Night	ICR Filter Auto Switch			
VIDEO				
Max. Image Resolution	1920×1080	2560×1920	1920×1080	2560×1920
Primary Stream	30fps@(1920×1080, 1280×960, 1280×720, 704x576)	20fps@(2560×1920, 2592×1520), 30fps@(2304x1296, 1920×1080, 1280×960, 1280×720, 704x576)	30fps@(1920×1080, 1280×960, 1280×720, 704x576)	20fps@(2560×1920, 2592×1520), 30fps@(2304x1296, 1920×1080, 1280×960, 1280×720, 704x576)
Secondary Stream	30fps@(704x576, 640×480, 640×360, 352x288, 320x240, 320x192, 320x176)			
Tertiary Stream	30fps@(1920×1080, 1280×720, 704×576, 640×480, 640×360, 320×240, 320x192, 320x176)			
Video Compression	H.265(HEVC)/ H.264/MJPEG			
Bit Rate	16Kbps~16Mbps (CBR/VBR Adjustable)			
Image Setting	Brightness/Contrast/Saturation/Sharpness			
NETWORK				
Ethernet Network Storage	1*RJ45 10M/100M Ethernet Port NAS (Support NFS, SMB/CIFS)			
Protocol	IPv4/IPv6, TCP, UDP, RTP, RTSP, RTCP, HTTP, HTTPS, DNS, DHCP, NTP, SNMP, NFS, CIFS			
SYSTEM				
Storage	Support microSD/SDHC/SDXC Card Local Storage, up to 128G			
Advanced Function	Motion Detection, Privacy Masking, Backlight Compensation, HLC, 2D DNR, 3D DNR, ROI, Anti-fog, White Balance, EIS, IP Address Filtering			
Event Trigger	Motion Detection, Network Disconnection, External Input, etc.			
Event Action	FTP Upload/SMTP Upload/SD Card Record			
Video Analysis	Region Entrance, Region Exiting, Advanced Motion Detection, Tamper Detection, Line Crossing, Loitering, Human Detection, People Counting, Object Left, Object Removed (*In development)			
System Compatibility	ONVIF Profile S			

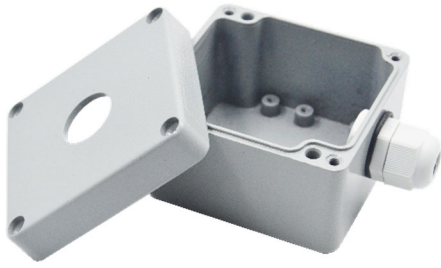
EXTERNAL INTERFACE (* = Optional)

DC-12V IN*	1
Audio I/O@Audio Compression*	1/1&G.711/AAC
Alarm In*	1
Alarm Out*	1 (Port can Drive 12V or 5V Relay)
Relay Out*	1
Power Return Out*	12V@500MA or 5V@1000MA
ADC In*	1@8bit
UART Port*	TTL@115200bps or Expansion for RS485
USB Port*	Expansion For 4G or WiFi
Type	Junction Box Version for Multiple External Interfaces Or Cable Out Version for Single External Interface
GENERAL	
Working Temperature	-40°C~60°C
Working Humidity	0~90% (Non-condensing)
Power Supply	PoE (802.3af)
Power Consumption	3W MAX 6W MAX (With IR on)
Weather Proof	Up to IP67-rated for Weather-resistant Performance
Weight	600g (Junction Box Version) 410g (Cable Out Version)
Dimensions	Φ67mmX190mm
Warranty	1 Year

DIMENSION (mm)



Accessories (Optional)



F-SC311 Junction Box

Weight: 500g

Dimensions: 80*73*60 mm

1 x Cable Connector

IP67 Protection

Ordering Information

Model	Megapixel	Lens	Optional Functions
F-SC311-21-M51120100001	2MP	Fixed Lens 2.8mm/ 4.0mm	SD, DC&POE
F-SC311-51-M51120100001	5MP	Fixed Lens 2.8mm/ 4.0mm	SD, DC&POE
F-SC311-25-M51120200001	2MP	AF Lens 3X 2.8~8.4mm	SD, DC&POE
F-SC311-55-M51120200001	5MP	AF Lens 3X 2.8~8.4mm	SD, DC&POE

Naming Convention

F-SC311-21-M51120100001

2-2MP
5-5MP

Mini Bullet

1-Fixed Lens
5-AF Lens

No.	1	2	3	4	5	6	7	8	9	10	11
Function	Power Interface	LAN Port	SD Card	IR LED	UART Interface	ADC	DI&DO	RELAY	Audio	USB	Cable Outlet
Code (0-None)	1-POE 5-POE & DC	1-100Mb/s Ethernet Port	1-SD card slot	2-Adjustable IR LED	1-TTL 2-RS232 3-RS485 4-GPS 5-LORA	1-Photosensitive ADC 2-Photosensitive ADC + ADC for AF Lens Temp 3- Photosensitive ADC + External Interface	1-DI 2-DO 3-DI&DO	1-RELAY1 2-RELAY2 3-RELAY 1&2	1-Audio In 2-Audio Out 3-Audio In&Out		1 - Cable 2 - Junction Box