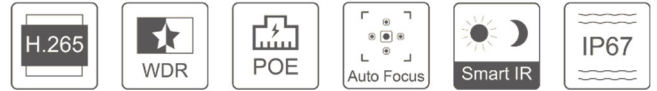


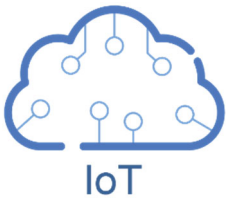


# 2/5 Megapixel H.265 Pro Bullet Network Camera



## KEY FEATURES

- ◆ **H.265**, optimized in bit rate, bandwidth and storage usage, 50% off than H.264.
- ◆ **Super WDR**, up to 140dB wide dynamic range ensure all the bright and dark areas are well presented.
- ◆ **IP67**, industrial level protection, provides solid stability and durability.
- ◆ **3X/4X AF Lens**, keep the clarity and focus on the correct objects rapidly, always deliver the high-quality image.



### IoT INTEGRATION

The camera can be integrated with most common IoT interface such as RS232, RS485, I/O, Relay, Analog Input, provides an all-in-one IoT surveillance solution.



### ULTRA-LOW LIGHT DETECTION

The starlight camera will catch all the details even in the no-light environment, the minimum illumination is 0.002Lux, and 0Lux with IR on.



### SMART IR LEDs

Industrial level IR LEDs, the distance is up to 50 meters. With the Smart IR technology, the camera can detect everything in any situation.

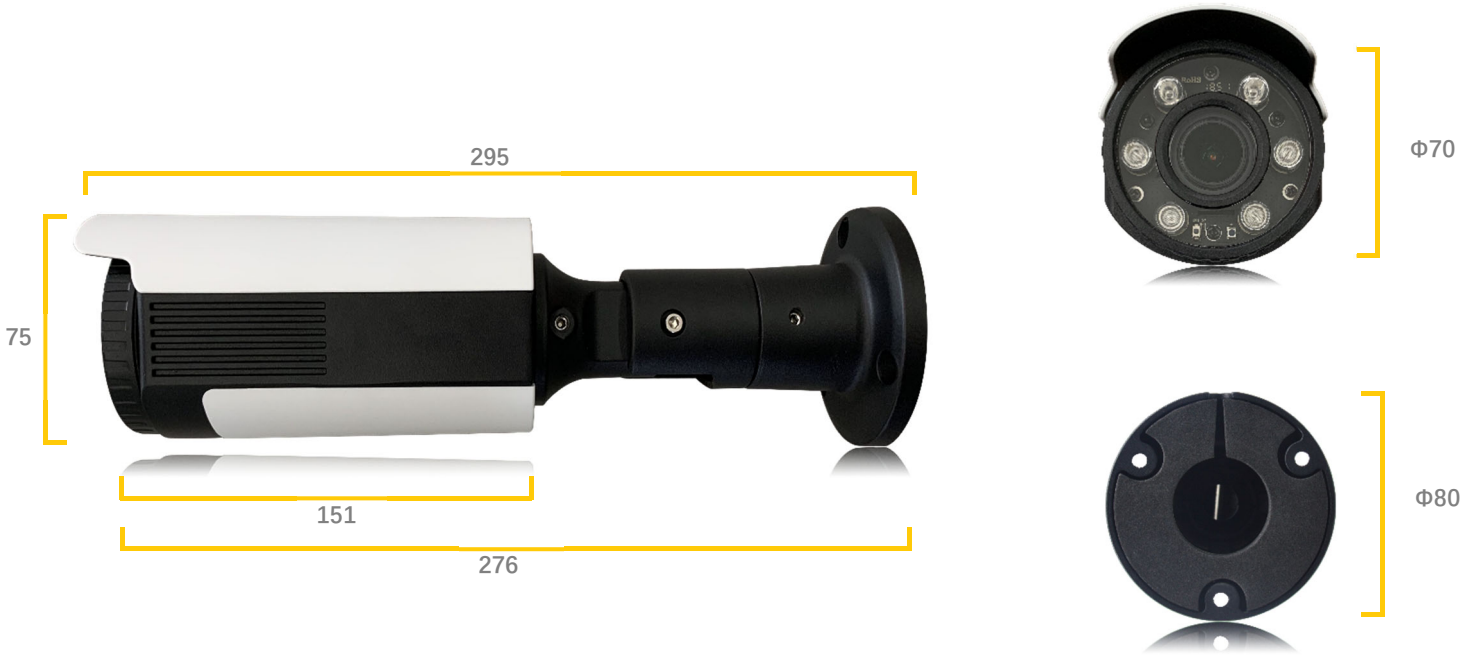
## SPECIFICATION

Model	F-SC331-21	F-SC331-51	F-SC331-24	F-SC331-54	F-SC331-25	F-SC331-55
<b>CAMERA</b>						
Image Sensor	1/2.8" Progressive Scan CMOS					
Resolution	2MP	5MP	2MP	5MP	2MP	5MP
Min. Illumination @F1.2	Color: 0.002Lux	Color: 0.005Lux	Color: 0.002Lux	Color: 0.005Lux	Color: 0.002Lux	Color: 0.005Lux
	B/W: 0Lux with IR on					
WDR	Super WDR up to 140dB			Super WDR up to 120dB		

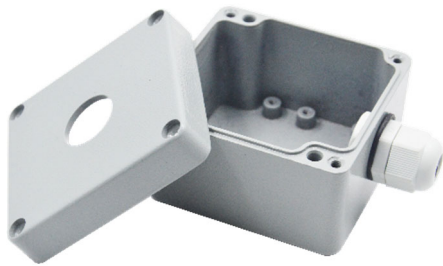
Model	F-SC331-21	F-SC331-51	F-SC331-24	F-SC331-54	F-SC331-25	F-SC331-55
<b>CAMERA</b>						
<b>Lens</b>	Fixed Lens 2.8mm @F2.0 / 3.2mm @F2.2 / 3.6mm @F2.2		Motorized Lens 2.7~12mm (3.2~10mm) @F1.6~F2.9, 3x Optical Zoom / 2.7~13.5mm (3.2~11.1mm) @F1.6~F3.3, 3x Optical Zoom		AF Motorized Lens 2.7~12mm (3.1~10.4mm) @F1.6~F3.15, 3x Optical Zoom / 2.7~13.5mm (3.1~11.1mm) @F1.6~F3.4, 4x Optical Zoom	
<b>Mount</b>	M12			Φ14		
<b>Field of View</b>	H123°/D142°/V 68° (2.8mm)	H113°/D144°/ V84° (2.8mm)	H109°~H32°/ D131°~D37°/ V58°~V18° (3.2~10mm)		H113.06°~H30.61° D136.77°~D35.12° V59.02°~V18.21° (3.1~10.4mm)	H112.82°~H30.62° D136.77°~D35.12° V58.92°~V17.22° (3.1~10.4mm)
	H108°/D126°/V 59° (3.2mm)	H98°/D124°/V 73° (3.2mm)	H109°~H28°/ D131°~D33°/ V58°~V16° (3.2~11.1mm)		H113.06°~H28.77° D136.70°~D33°/ V59.02°~V16.2° (3.1~11.1mm)	H113.06°~H28.77° D136.70°~D33° V59.02°~V16.2° (3.1~11.1mm)
	H90°/D105°/V4 8° (3.6mm)	H82°/D105°/V 60° (3.6mm)				
<b>Shutter Time</b>	1/100000s~1/5s					
<b>IR Distance</b>	Up to 100m					
<b>Day&amp;Night</b>	ICR Filter Auto Switch					
<b>VIDEO</b>						
<b>Max. Image Resolution</b>	1920×1080	2560×1920	1920×1080	2560×1920	1920×1080	2560×1920
<b>Primary Stream</b>		20fps@ (2560×1920, 30fps@ 2592×1520), 30fps@ (2304x1296, 1280×960,1280×7 20, 704x576)	30fps@ (1920×1080, 1280×960,1280×7 20, 704x576)	20fps@ (2560×1920, 30fps@ 2592×1520), 30fps@ (2304x1296, 1280×960, 1280×720, 704x576)	30fps@ (1920×1080, 1280×960,1280×7 20, 704x576)	20fps@ (2560×1920, 30fps@ 2592×1520), 30fps@ (2304x1296, 1280×960, 1280×720, 704x576)
	<b>Secondary Stream</b>	30fps@ (704x576, 640×480, 640×360, 352x288, 320x240, 320x192, 320x176)				
<b>Tertiary Stream</b>	30fps@ (1920×1080, 1280×720, 704×576, 640×480, 640×360, 320×240, 320x192, 320x176)					
<b>Video Compression</b>	H.265 (HEVC) / H.264/MJPEG					
<b>Bit Rate</b>	16Kbps~16Mbps (CBR/VBR Adjustable)					
<b>Image Setting</b>	Brightness/Contrast/Saturation/Sharpness					
<b>NETWORK</b>						
<b>Network Storage</b>	NAS (Support NFS, SMB/CIFS)					

Model	F-SC331-21	F-SC331-51	F-SC331-24	F-SC331-54	F-SC331-25	F-SC331-55
<b>NETWORK</b>						
<b>Ethernet</b>	1*RJ45 10M/100M Ethernet Port					
<b>Protocol</b>	IPv4/IPv6, TCP, UDP, RTP, RTSP, RTCP, HTTP, HTTPS, DNS, DHCP, NTP, SNMP, NFS, CIFS					
<b>SYSTEM</b>						
<b>Storage</b>	Support microSD/SDHC/SDXC Card Local Storage, up to 128G					
<b>Advanced Function</b>	Motion Detection, Privacy Masking, Backlight Compensation, HLC, 2D DNR, 3D DNR, ROI, Anti-fog, White Balance, EIS, IP Address Filtering					
<b>Event Trigger</b>	Motion Detection, Network Disconnection, External Input, etc.					
<b>Event Action</b>	FTP Upload/SMTP Upload/SD Card Record					
<b>Video Analysis (Optional)</b>	Region Entrance, Region Exiting, Advanced Motion Detection, Tamper Detection, Line Crossing, Loitering, Human Detection, People Counting, Object Left, Object Removed (* In development)					
<b>System Compatibility</b>	ONVIF Profile S					
<b>EXTERNAL INTERFACE ( * = Optional )</b>						
<b>DC-12V IN*</b>	1					
<b>Audio I/O@Audio Compression*</b>	1/1&G.711/AAC					
<b>Alarm In*</b>	1					
<b>Alarm Out*</b>	1 (Port can Drive 12V or 5V Relay)					
<b>Relay Out*</b>	1					
<b>Power Return Out*</b>	12V@500MA or 5V@1000MA					
<b>ADC In*</b>	1@8bit					
<b>UART Port*</b>	TTL@115200bps or Expansion for RS485					
<b>USB Port*</b>	Expansion For 4G Or WiFi					
<b>Type</b>	Junction Box Version for Multiple External Interfaces Or Cable Out Version for Single External Interface					
<b>GENERAL</b>						
<b>Working Temperature</b>	-40°C~60°C					
<b>Working Humidity</b>	0~90% (Non-condensing)					
<b>Power Supply</b>	PoE (802.3af)					
<b>Power Consumption</b>	6W MAX 12W MAX (With IR on)					
<b>Weather Proof</b>	Up to IP67-rated for Weather-resistant Performance					
<b>Weight</b>	800g (Junction Box Version) 610g (Cable Out Version)					
<b>Dimensions</b>	Φ75mmX295mm					
<b>Warranty</b>	1 Year					

## DIMENSION (mm)



## Accessories (Optional)



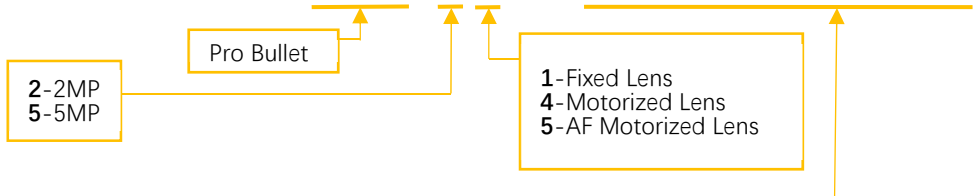
F-SC331 Junction Box  
 Weight: 600g  
 Dimensions: 80\*73\*60 mm  
 1 x Cable Connector  
 IP67 Protection

## Ordering Information

Model	Megapixel	Lens	Optional Functions
F-SC331-21- M51130100001	2MP	Fixed Lens 2.8mm / 4.0mm	SD, DC&POE
F-SC331-51- M51130100001	5MP	Fixed Lens 2.8mm / 4.0mm	SD, DC&POE
F-SC331-24- M51130100001	2MP	3X Motorized Lens 2.7~12mm / 2.7~13.5mm	SD, DC&POE
F-SC331-54- M51130100001	5MP	3X Motorized Lens 2.7~12mm / 2.7~13.5mm	SD, DC&POE
F-SC331-25- M51130100001	2MP	3X AF Motorized Lens 2.7~12mm / 4X AF Motorized Lens 2.7~13.5mm	SD, DC&POE
F-SC331-55- M51130100001	5MP	3X AF Motorized Lens 2.7~12mm / 4X AF Motorized Lens 2.7~13.5mm	SD, DC&POE

## Naming Convention

# F-SC331-21-M51130100001



No.	1	2	3	4	5	6	7	8	9	10	11
Function	Power Interface	LAN Port	SD Card	IR LED	UART Interface	ADC	DI&DO	RELAY	Audio	USB	Cable Outlet
Code (0-None)	1-POE 5-POE & DC	1-100Mb/s Ethernet Port	1-SD card slot	3-2 Sets of Adjustable IR LED	1-TTL 2-RS232 3-RS485 4-GPS 5-LORA	1-Photosensitive ADC 2-Photosensitive ADC + ADC for AF Lens Temp 3- Photosensitive ADC + External Interface	1-DI 2-DO 3-DI&DO	1- RELAY1 2- RELAY2 3-RELAY 1&2	1-Audio In 2-Audio Out 3-Audio In&Out		1 - Cable 2 - Junction Box