



5G IoT HD Bullet Network Camera



KEY FEATURES

- ◆ **H.265**, optimized in bit rate, bandwidth and storage usage, 50% off than H.264.
- ◆ **Super WDR**, up to 140dB wide dynamic range ensure all the bright and dark areas are well presented.
- ◆ **IP67**, industrial level protection, provides solid stability and durability.
- ◆ **12X/16X AF Lens**, keep the clarity and focus on the correct objects rapidly, deliver the high-quality image.



IoT Integration

The camera can be integrated with most common IoT interface such as RS232, RS485, I/O, Relay, Analog Input, provides an all-in-one IoT surveillance solution.



RTU Function, Support Various IoT Protocol

Embedded RTU function allow user to do active acquisition from sensors. Support various IoT industrial protocol and standard, use internal MCU to do linkage control.



5G High-Speed Cellular Network

Compatible with 4G or 5G high-speed Cellular module, install the camera in any flexible location and remote monitoring from anywhere wirelessly.

SPECIFICATION

Model	F-SC241-21 (Fixed Lens)	F-SC241-24 (4X)	F-SC241-216 (16X)
CAMERA			
Image Sensor	1/2.8" Progressive Scan CMOS		
Resolution	2MP		
Min. Illumination	Color: 0.002Lux@F1.2 B/W: 0Lux with IR on		
WDR	Super WDR up to 140dB		

Model	F-SC241-21 (Fixed Lens)	F-SC241-24 (4X)	F-SC241-216 (16X)
CAMERA			
Lens	Fixed Lens 2.8mm @F2.0	4X AF Motorized Lens 2.7~13.5mm (3.1~11.1mm) @F1.6~F3.4	16X AF Motorized Lens 5.85~93.6mm @F1.8~F3.9
Field of View	H123°/D142°/V68°	H113.06°~H30.61° D136.77°~D35.12° V59.02°~V18.21°	H55.4°~H3.55° D62.6°~D4.05° V31.6°~V2°
Shutter Time	1/100000s~1/5s		
IR Distance	150m		
Day & Night	ICR Filter Auto Switch		
VIDEO			
Max. Image Resolution	1920×1080		
Primary Stream	30fps@(1920×1080, 1280×960, 1280×720, 704×576)		
Secondary Stream	30fps@(704×576, 640×480, 640×360, 352×288, 320×240, 320×192, 320×176)		
Tertiary Stream	30fps@(1920×1080, 1280×720, 704×576, 640×480, 640×360, 320×240, 320×192, 320×176)		
Video Compression	H.265(HEVC)/H.264/MJPEG		
Bit Rate	16Kbps~16Mbps (CBR/VBR Adjustable)		
Image Setting	Brightness/Contrast/Saturation/Sharpness		
NETWORK			
Ethernet	1*RJ45 10M/100M Ethernet Port		
Network Storage	NAS (Support NFS, SMB/CIFS)		
Protocol	IPv4/IPv6, TCP, UDP, RTP, RTSP, RTCP, HTTP, HTTPS, DNS, DHCP, NTP, SNMP, NFS, CIFS		
SYSTEM			
Storage	Support microSD/SDHC/SDXC Card Local Storage, up to 128G		
Advanced Function	Motion Detection, Privacy Masking, Backlight Compensation, HLC, 2D DNR, 3D DNR, ROI, Anti-fog, White Balance, EIS, IP Address Filtering		
Event Trigger	Motion Detection, Network Disconnection, External Input, etc.		
Event Action	FTP Upload/SMTP Upload/SD Card Record		
Video Analysis (Optional)	Region Entrance, Region Exiting, Advanced Motion Detection, Tamper Detection, Line Crossing, Loitering, Human Detection, People Counting, Object Left, Object Removed (* In development)		
CELLULAR (Optional)			
Standard & Band	5G, LTE FDD, LTE TDD, EVDO, WCDMA, TD-SCDMA, CDMA1X, GPRS/EDGE		
Bandwidth	5G NR: Downstream rate 3.4Gbps, uplink rate 350Mbps FDD-LTE: Downstream rate 150Mbps, uplink rate 50Mbps TD-LTE: Downstream rate 130Mbps, uplink rate 35Mbps		
Transmit Power	<23dBm		
Sensitivity	<-97dBm		
GPS (Optional)			
GPS Module	Industrial GPS module, compatible with Beidou、GLONASS		
Accuracy	Positioning: 2.5m CPE SBAS: 2.0m CPE		
Sensitivity	Tracking: -160dBm Recapture: -160dBm Cold Boot: -146dBm		

EXTERNAL INTERFACE (* = Optional)

DC-12V IN*	Standard DC12V, Support 12~60V
Audio I/O@Audio Compression*	1/1&G.711/AAC
IO & Relay*	2 x DI, 2 x DO, 2 x Relay
ADC	2@12bit
UART*	2 x RS232 & 2 x RS485
Power Return*	12V@500MA & 5V@1000MA
Storage*	Internal Micro SD Slot, support Micro SD/Micro SDHC/Micro SDXC card (Support Maximum 128G) Internal 2.5" Hard Disk SATA interface, support maximum 6TB HDD or SSD
Network Interface Type	RJ45 10/100M Ethernet M16 Waterproof Interface

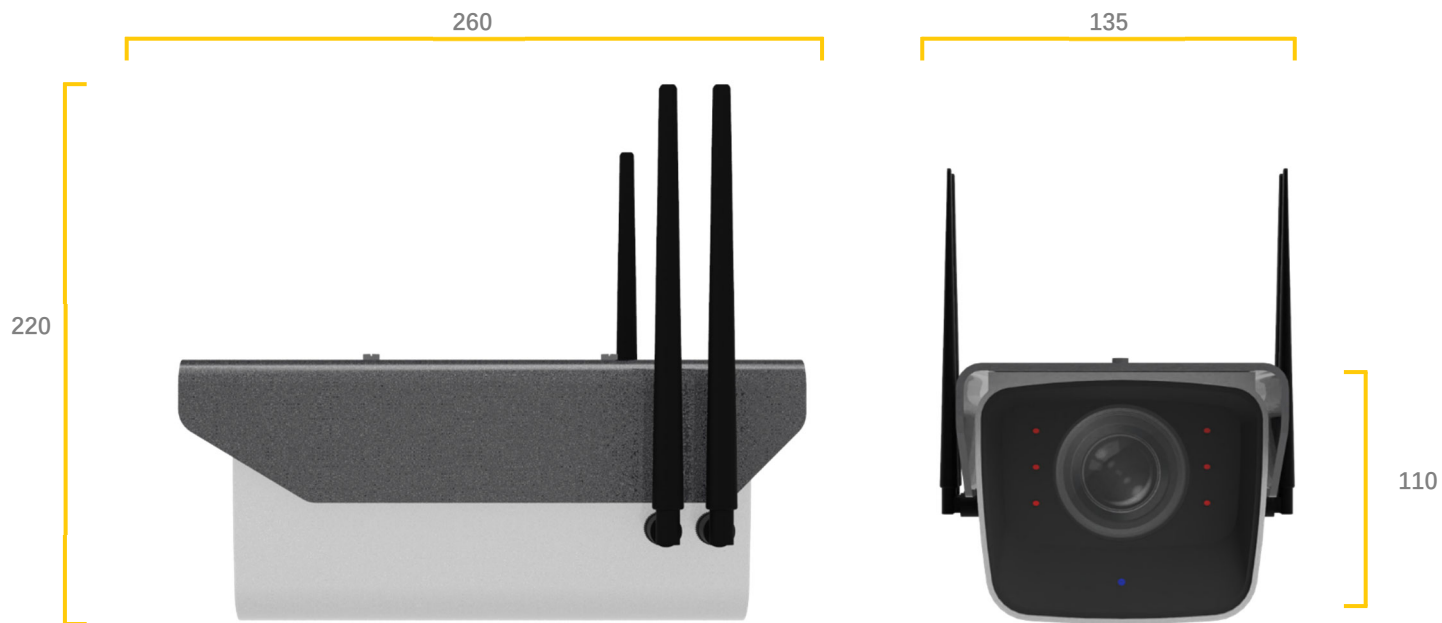
GENERAL

Working Temperature	-40°C~75°C
Working Humidity	0~90% (Non-condensing)
Power Supply	PoE (802.3at) Standby 0.3W
Power Consumption	4W MAX (Day Mode with 4G) 15W MAX (IR On with 4G)
Weather Proof	IP67
Weight	4.5 KG
Dimensions	260*130*110mm (Without Accessories)
Warranty	3 Years

Protocol & Industrial Standard

Protocol & Industrial Standard	Onvif Profile S GB/T28181-2016 SZY206-2016 HJ/T212-2017 SL651-2014 Modbus RTU MQTT IEC101*, IEC104* (*In development)
---	--

Dimensions (mm)



(Note: There may be differences between models of accessories and interfaces, actual products shall prevail)

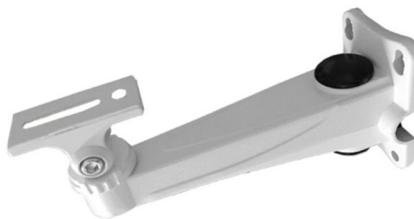
Accessories (Optional)



Cardan Joint1



Cardan Joint2



Bracket



Motorized PTZ Bracket

Ordering Info

Model	Megapixel	Lens	Functions
F-SC241-21-5G	2MP	Fixed Lens	SD, DC&POE, 5G High-speed Module
F-SC241-24-5G	2MP	4X AF Motorized Lens	SD, DC&POE, 5G High-speed Module
F-SC241-216-5G	2MP	16X AF Motorized Lens	SD, DC&POE, 5G High-speed Module
F-SC241-21-4G	2MP	Fixed Lens	SD, DC&POE, 4G High-speed Module
F-SC241-24-4G	2MP	4X AF Motorized Lens	SD, DC&POE, 4G High-speed Module
F-SC241-216-4G	2MP	16X AF Motorized Lens	SD, DC&POE, 4G High-speed Module

Naming Convention

