

IP Camera	Document Version	Pages
User Manual	V1.1.0	30



# IP Camera User Manual

This user manual applies to the following types of products:

Series number	Product types
F-SC621	Mini Dome Camera
F-SC431	Speed Dome Camera
F-SC341	SPro Cellular Bullet Camera
F-SC332	Pro Cellular Bullet Camera
F-SC331	Pro Cellular Bullet Camera
F-SC311	Mini Bullet Camera
F-SC241	4G&5G IoT RTU Bullet Camera

Add: 11th Floor, A-06 Area, No.370, Chengyi Street, Jimei District, Xiamen City, Fujian Province, China.

Tel: +86 592-5907276 Fax: +86 592-5912735

Web: [en.four-faith.com](http://en.four-faith.com)




### Files Revised Record

Date	Version	Remark	Author
2019-05-01	V1.0.0	Initial Version	Wayne
2020-12-01	V1.1.0	Add latest products and new features instruction	Jonas

## Copyright Notice

All contents in the files are protected by copyright law, and all copyrights are reserved by Xiamen Four-Faith Communication Technology Co., Ltd. Without written permission, all commercial use of the files from Four-Faith are forbidden, such as copy, distribute, reproduce the files, etc., but non-commercial purpose, downloaded or printed by individual (all files shall be not revised, and the copyright and other proprietorship notice shall be reserved) are welcome.

## Trademark Notice

Four-Faith, 四信, , ,  are all registered trademarks of Xiamen Four-Faith Communication Technology Co., Ltd., illegal use of the name of Four-Faith, trademarks and other marks of Four-Faith is forbidden, unless written permission is authorized in advance.



Note: There may be differences between models of accessories and interfaces, actual products shall prevail.

# CONTENTS

<b>CHAPTER 1</b>	<b>BRIEF INTRODUCTION OF PRODUCT .....</b>	<b>1</b>
1.1	General.....	1
1.2	Product Line.....	2
1.3	Word Definition .....	2
<b>CHAPTER 2</b>	<b>SYSTEM .....</b>	<b>3</b>
2.1	Structure & Diagram.....	3
2.1.1	IPC Working Principle Diagram .....	3
2.1.2	IPC Cloud Management Structure.....	3
2.2	Features .....	4
2.2.1	Network.....	4
2.2.2	System.....	4
2.2.3	External interface.....	4
2.2.2	Cloud Platform .....	4
2.2.2	Other Web Funtions.....	5
2.3	Performance.....	5
2.3.1	Streaming Concurrency .....	5
2.3.2	Video Storage .....	5
<b>CHAPTER 3</b>	<b>OPERATING ENVIRONMENT .....</b>	<b>6</b>
3.1	Computer Requirement.....	6
3.2	Connection .....	6
3.2.1	Equipment power supply .....	6
3.2.2	Network connection .....	7
3.2.3	Access to devices .....	7
3.2.4	Device search and IP setting.....	9
3.2.5	Device login .....	11
<b>CHAPTER 4</b>	<b>MAIN FUNCTION .....</b>	<b>13</b>
4.1	Interface.....	13
4.1.1	Ethernet .....	13

4.1.2	SD/TF Card.....	13
4.1.3	RS485.....	13
4.1.4	Audio Interface.....	13
4.1.5	External I/O.....	13
4.1.6	External RELAY Interface.....	14
4.1.7	ADC In.....	14
4.1.8	USB.....	错误!未定义书签。
<b>4.2</b>	<b>Local Web Management Portal .....</b>	<b>14</b>
4.2.1	Login .....	14
4.2.2	Configuration .....	15
4.2.3	Display Setting.....	15
4.2.4	Video Setting .....	16
4.2.5	Real-time Video .....	16
4.2.6	Video Playback.....	21
4.2.7	Video Record Schedule.....	22
4.2.8	Alarm.....	23
4.2.9	Storage Configuration.....	23
4.2.10	Network Configuration .....	24
4.2.11	4G/5G Configuration.....	25
4.2.12	Cloud Platform Configuration.....	26
4.2.13	SMTP .....	29
4.2.14	Device Upgrade .....	30
<b>4.3</b>	<b>Video Coding.....</b>	<b>30</b>

# Chapter 1 Brief Introduction of Product

## 1.1 General

Four-Faith IP Camera series provides a comprehensive range of security and surveillance solution to meet users' requirement. The cameras can be set up in a network and controlled or managed locally and remotely. Users can use it as an independent monitoring camera or connect to an NVR to build a surveillance system. With the APP and cloud platform, users will be able to access the camera on a mobile phone and other computer devices.

Four-Faith cameras use the high-performance CPU and other industrial-grade units, with the embedded real-time operating system as the software support platform. The cameras support H.265/H.264/MJPEG video compression algorithm and industry-leading HD dual-stream technology to achieve the highest level of video image quality under the limited network resources. It is fully functional, supporting for flexible and comprehensive alarm linkage mechanism, day and night auto switch, smart PTZ control and privacy masking, etc.\*

The product has been widely used in the M2M industry of the IoT industrial chain, such as smart grid, intelligent transportation, smart home, finance, mobile POS terminals, supply chain automation, industrial automation, intelligent building, fire protection, public safety, environmental protection, meteorology, digital medical, telemetry, agriculture, forestry, water, coal, petrochemical and other related fields.

\*Only available for specific models

## 1.2 Product Line



## 1.3 Word Definition

Word	Explanation
IPC	IP Camera
H.264	Advanced Video Coding (MPEG-4 AVC) is a block-oriented motion-compensation-based video compression standard.
H.265	High Efficiency Video Coding(HEVC), also known as H.265 and MPEG-H Part 2, is a video compression standard, designed as a successor to the widely used AVC (H.264 or MPEG-4 Part 10).
MJPEG	Motion JPEG (M-JPEG or MJPEG) is a video compression format in which each video frame or interlaced field of a digital video sequence is compressed separately as a JPEG image.
SIP	The Session Initiation Protocol (SIP) is a signaling protocol used for initiating, maintaining, and terminating real-time sessions that include voice, video and messaging applications.
WDR	Wide Dynamic Range (WDR) is a term used in the surveillance camera industry to refer to high-dynamic-range imaging.
RTSP	The Real Time Streaming Protocol (RTSP) is a network control protocol designed for use in entertainment and communications systems to control streaming media servers.



# Chapter 2 System

## 2.1 Structure & Diagram

### 2.1.1 IPC Working Principle Diagram

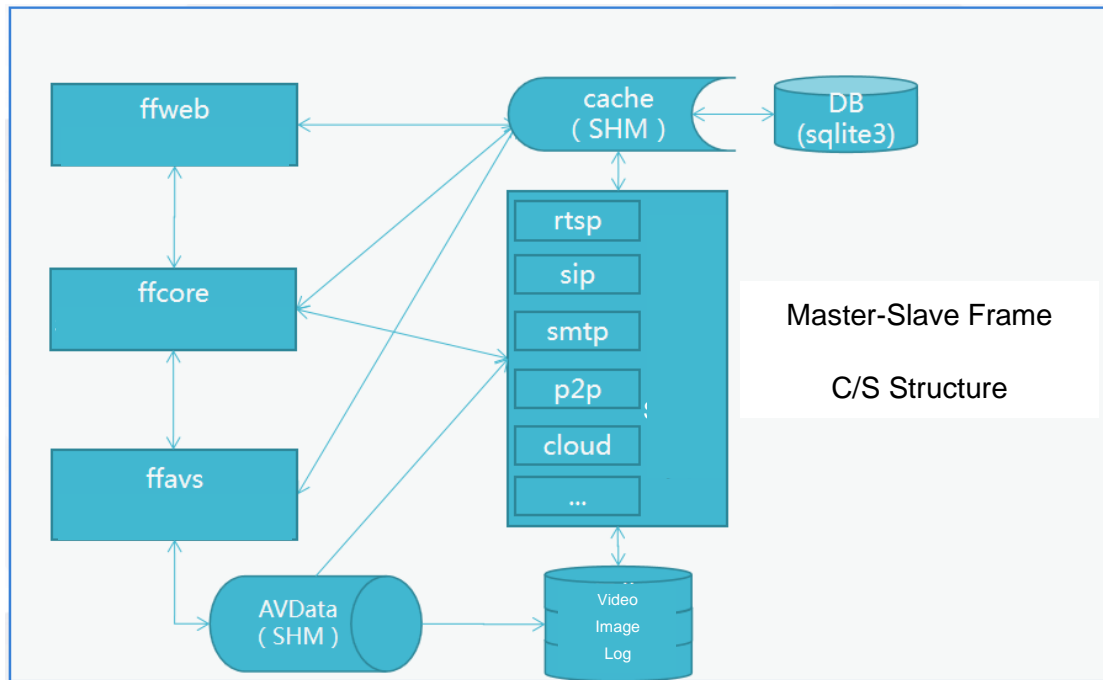


Diagram 2.1.1 IPC System Structure

### 2.1.2 IPC Cloud Management Structure

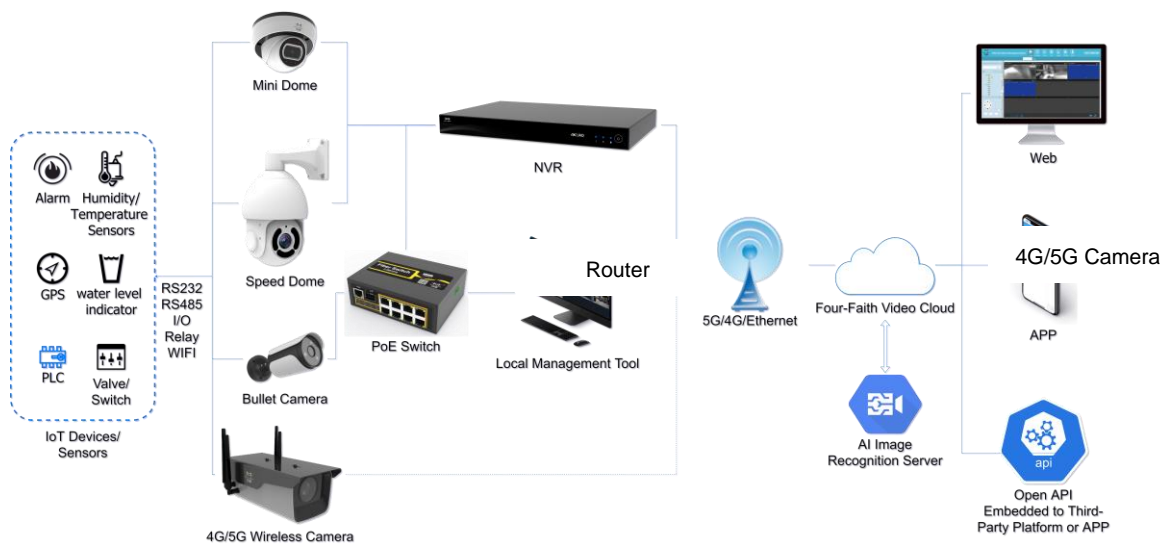


Diagram 2.1.2 Cloud Management Structure

## 2.2 Features

### 2.2.1 Network

- ❖ Ethernet: 1\*RJ45 10M/100M Ethernet Port
- ❖ Network Storage: NFS、CIFS/SMB
- ❖ Protocol: IPv4/IPv6, TCP, UDP, RTP, RTSP, RTCP, HTTP, HTTPS, DNS, DDNS, DHCP, FTP, NTP, SMTP

### 2.2.2 System

- ❖ Storage: Support Micro SD/SDHC/SDXC Card Local Storage, up to 128G
- ❖ Advanced Function: Motion Detection, Privacy Masking, Backlight Compensation, HLC, 2D DNR, 3D DNR, ROI, Anti-fog, White Balance, EIS, IP Address Filtering
- ❖ Event Trigger: Motion Detection, Network Disconnection, External Input, Audio Alarm, etc.
- ❖ Event Action: FTP Upload/SMTP Upload/SD Card Record or Snapshot
- ❖ System Compatibility: Onvif Profile S, GB/T28181

### 2.2.3 External Interface

- ❖ Power: DC-12v or POE
- ❖ Audio: 1\*
- ❖ Alarm: 1 Alarm In+1 Alarm Out (Port can Drive 12V or 5V Relay)\*
- ❖ Relay Out: 1 Relay OUT\*
- ❖ ADC In: 1 8bit IN\*
- ❖ UART Port: TTL@115200bps Or Expansion for RS485\*

\* = Optional

### 2.2.4 Cloud Platform

- ❖ Remote web server device management cloud platform for user to do remote status monitoring, configuration and update, etc.

## 2.2.5 Other Web Functions

- ❖ Local web server for device configuration, system maintenance, storage management, video monitoring, etc.
- ❖ Video Playback: Support video playback on web browser
- ❖ NTP: NTP with RTC, support timed reboot, scheduled power on or off
- ❖ Internet: Support IPv4 & IPv6, including static IP and DHCP.
- ❖ External PTZ: RS232/RS485 + Pelco-D

## 2.3 Performance

### 2.3.1 Streaming Concurrency

Support maximum 10 ways video real-time streaming when all 3 stream types are on. (Primary, Secondary and Tertiary stream. 2 ways 1080P, 1 way D1 30fps, using H264/H265/MJPEG)

### 2.3.1 Video Storage

Support 1 way SD card scheduled video recording & image capture, multi-way SD card alarm recording & capture.

# Chapter 3 Operating Environment

## 3.1 Computer requirement

- ❖ Recommended Windows 8 and above.
- ❖ IE 11 or above.

## 3.2 Connection

### 3.2.1 Equipment power supply

Four-Faith IP camera supports PoE power supply and DC 9-60V wide voltage power supply. Users can choose one of the power supply modes to power the equipment. The power supply and network interface can be seen at the end of the camera after the screws around the cover plate are removed.

When the device is normally powered on, the infrared light at the front of the camera will flash quickly, and there will be a slight clicking sound inside the lens. At the same time, when the back cover is opened, it can be seen that there are lights inside.

Power interface diagram:

Terminal Interface (F-SC241/431)



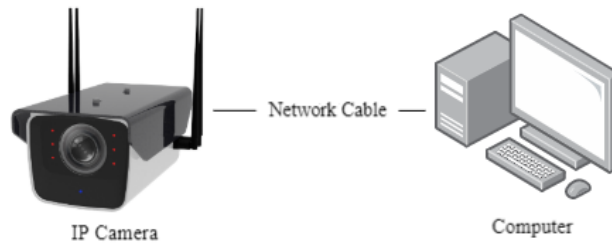
DC interface (other models)



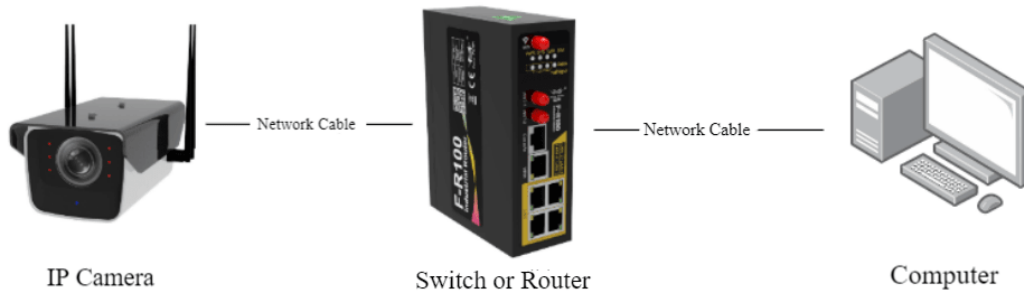
### 3.2.2 Network connection

The camera can be connected to the computer for debugging and configuration in the following ways:

1. Direct computer connection



2. Connect through a switch or router

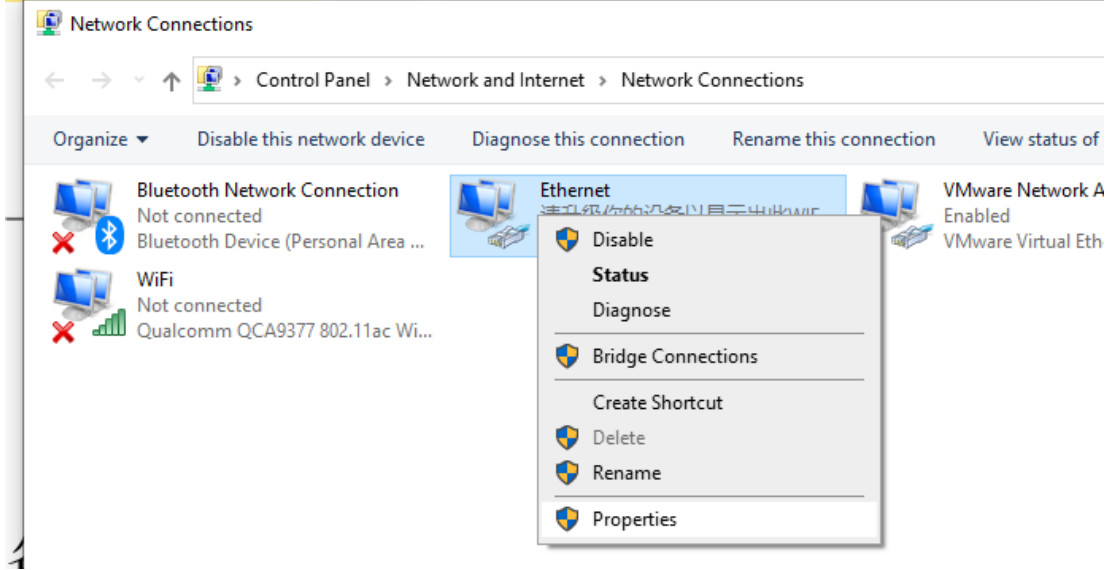


### 3.2.3 Access to devices

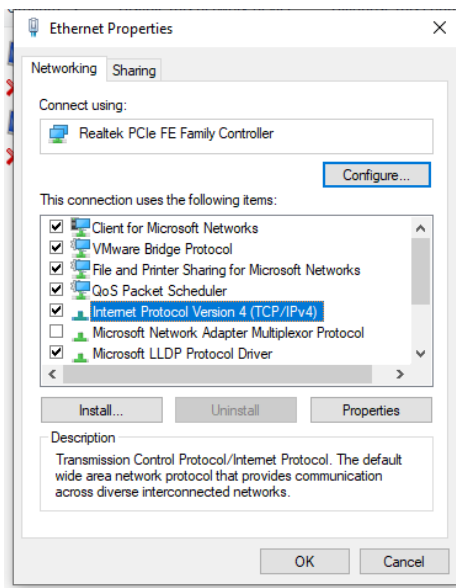
Factory default configuration page address of IPC is <http://192.168.1.100>. Default user name is admin, the password is xmsx1234. If the computer and the camera are in a different network segment so that customer cannot directly access the camera from the computer.

In the case of a direct computer connection, it is necessary to set a fixed IP address for the computer first. The specific operation is as follows:

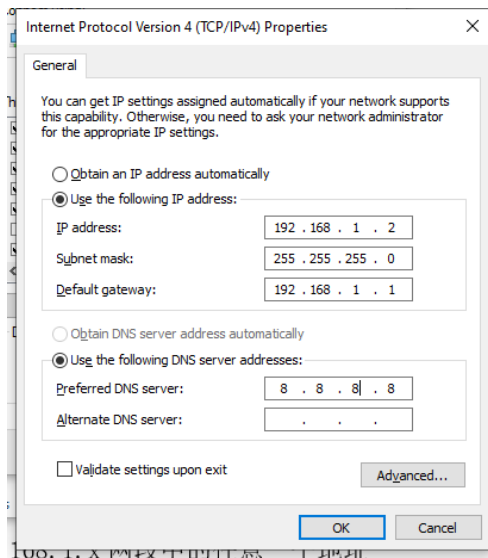
1. Open the Network Connections page of the computer and right-click the Ethernet and choose properties.



2. Modify IPv4.



3. Set the COMPUTER IP to any address in 192.168.1.x network segment.

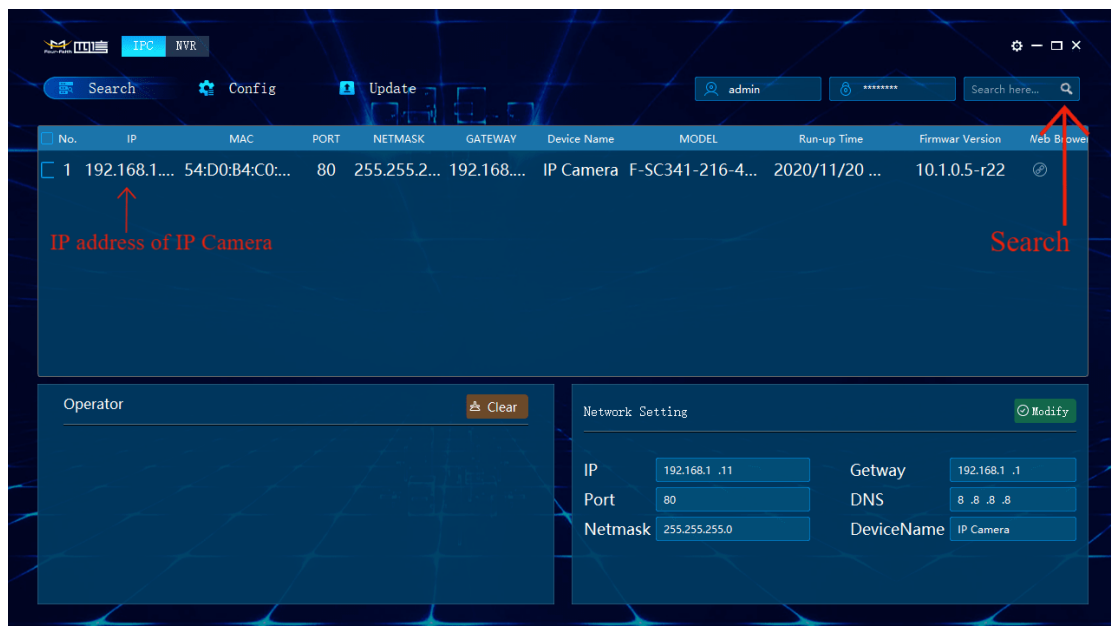


4. Try to access the IP camera configuration web page <http://192.168.1.100> from Internet Explorer.

### 3.2.4 Device search and IP setting

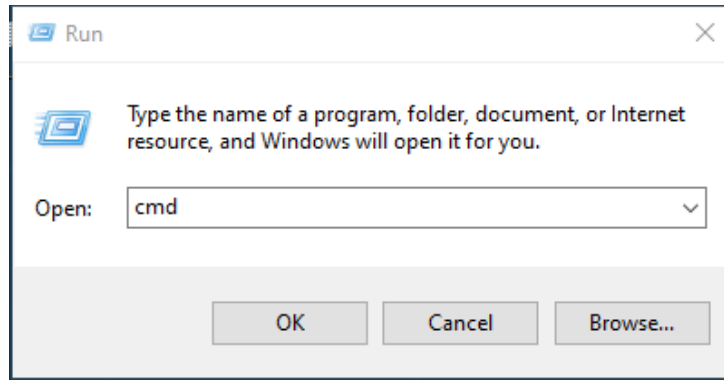
When customer using a switch or router to connect, the device may not be able to access because the camera is in a different network segment from the computer and router. At this time, customer needs to use search tools to search IPC device for configuration.

Open Incisive Tools and click the search button. The tool will search all camera devices under the same LAN and list them together.

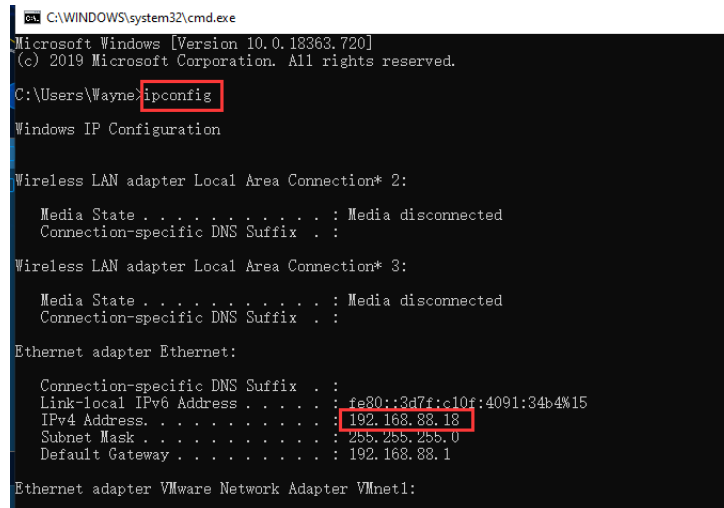


Please confirm whether the IP address of the IP camera is in the same network segment as the computer. Otherwise, the configuration of the camera cannot be accessed. The following processes can use for obtain the network segment where the computer is located:

Press Win+R on a Windows computer to open the CMD:



Enter ipconfig in the command bar and press Enter:



If the network segment of the computer is 192.168.88.x, the IP of the IP camera should also be changed to 192.168.88.x. If the network segment of the computer is 192.168.0.x, the IP of the camera should be changed to 192.168.0.x, and so on.

In the search tool, the IP of the device can be directly modified in batches. The specific processes are as follows:





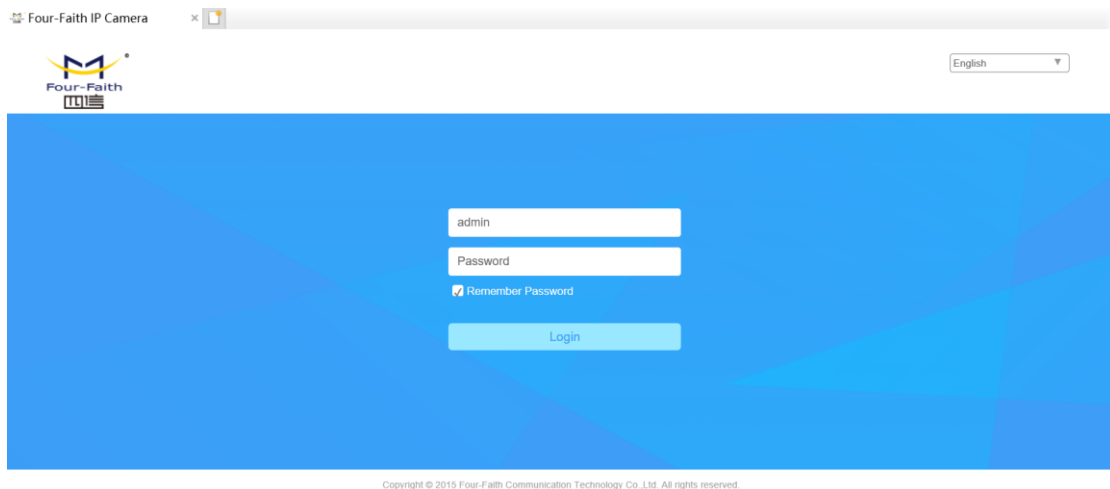
For information about the Incisive Tools, please refer to the user manual of the Incisive Tools.

### 3.2.5 Device login

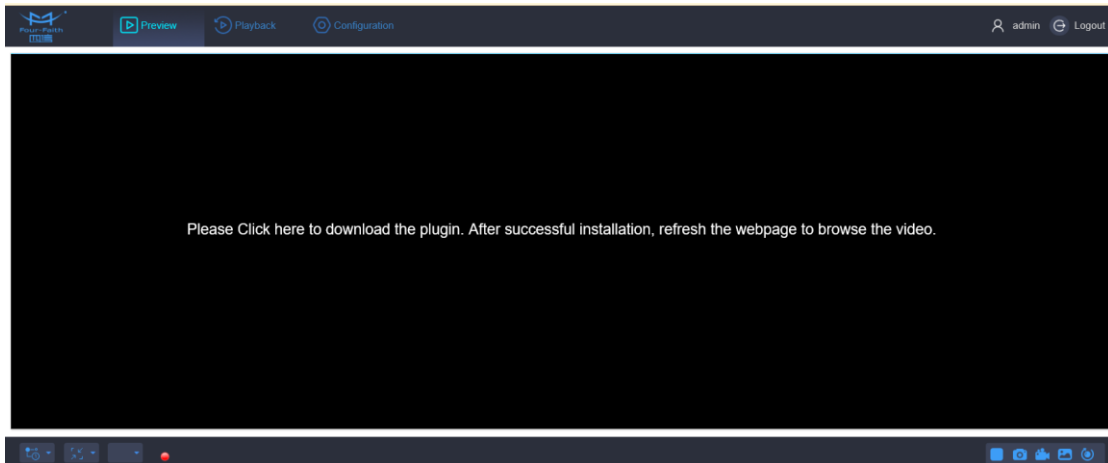
1. Open IE browser (IE 8.0 or above) and enter the IP address of IPC.
2. Enter ID and password to login.

**Notice:**

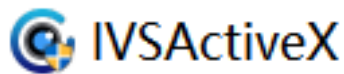
1. Initial account of standard version: admin; Password: xmsx1234.
2. The version before V1.0.0.5, password is ff2018.



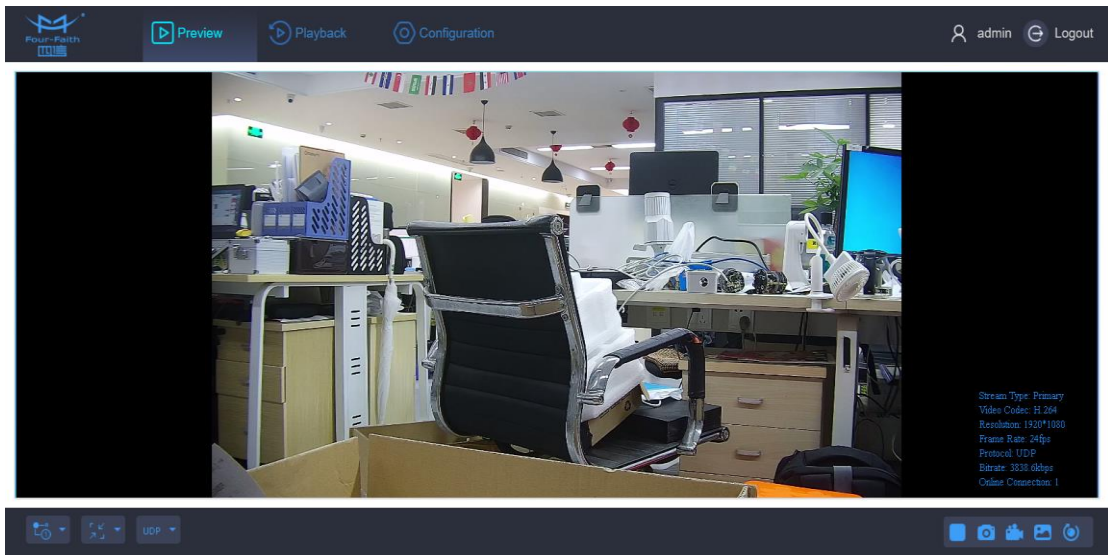
3. The user needs to install the video plug-in when the user login to IE for the first time. Click and download the video player plug-in.



4. After finish downloading, install the video plug-in.



5. After finish installing the video plug-in, refresh the IE. Users can check real-time video monitoring on IE and user can operate different functions of IPC on this web interface.



# Chapter 4 Main Function

## 4.1 Embedded System

### 4.1.1 Ethernet

1 x 10/100M auto-adaptive Ethernet port

### 4.1.2 SD/TF Card

SD card auto mount directory: /mnt/mmc/, for video recording and image capture. The related web page will show the usage information, user can also check the files inside the SD card.

**Note:** The SD card needs to be initialized when user use IPC at the first time.

### 4.1.3 RS485

The RS485 serial port control directory: /dev/ttyS1 (COM1 on the hardware), can be connect to external PTZ to realize PTZ control.

### 4.1.4 Audio Interface

Support 1 way MIC or Linear input. There is a reserved power amplifier interface inside the camera, user can connect it to a speaker directly. The IPC support web audio talkback, press the talk button to do real time talkback.

### 4.1.5 External I/O

Support external I/O, some models support external GPIO input and output, can be connected to other external alarm signal, such as smoke alarm, light alarm, etc. IPC can output TTL signal to trigger other action after received the alarm signal, such as control relay to send out alarm, or activate fire alarm system.

## 4.1.6 External RELAY Interface

Support external RELAY OUT, can output signal to trigger other action.

## 4.1.7 ADC In

Support external ADC collection, can be used for real-time analog data collection in some specific environment. For example, to check the temperature of a fishpond, the IPC can be connected to an external temperature sensor to collect the voltage analog data. When there is an abnormal temperature, it will trigger the alarm to remind the fishman to adjust the temperature.

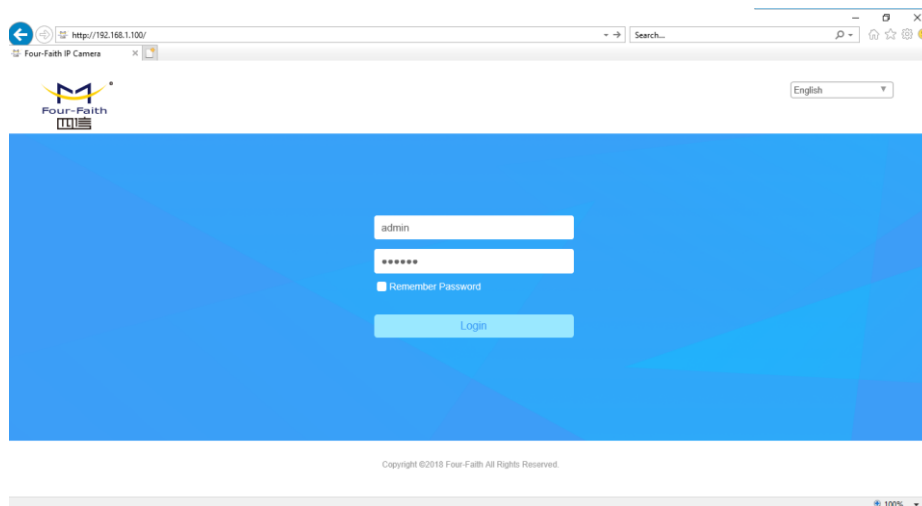
# 4.2 Local Web Management Portal

We recommend using Windows Internet Explorer to get the best user experience. You may require installing some plug-ins before you use the web portal.

## 4.2.1 Login

The default login credential is printed on a tag on your camera. The login IP address is 192.168.1.100, username is admin, and password is ff2018 unless you have changed them before.

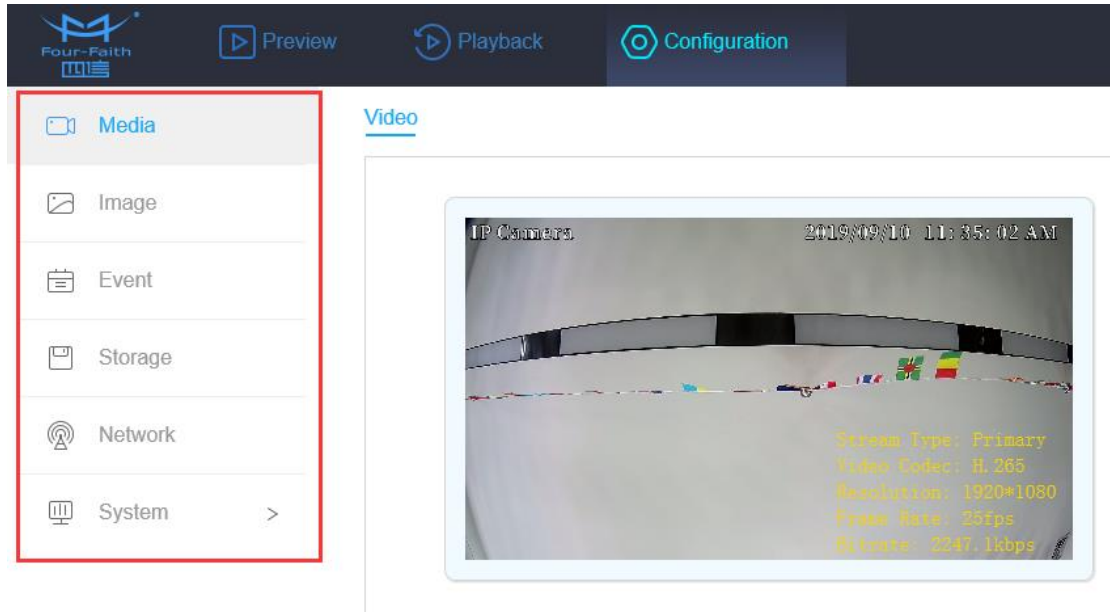
Type in the address and user info, click login to enter the management portal.



### 4.2.2 Configuration

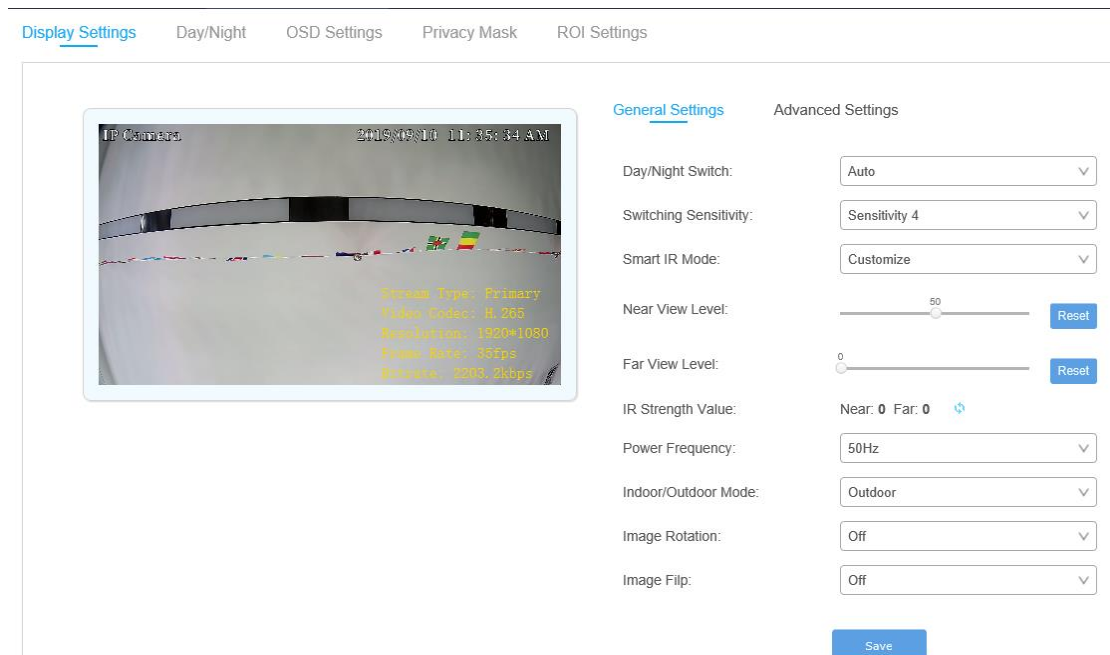
Click the 'Configuration' tab on the top menu, user can manage the IPC from the following page.

The side menu has list out all the items that user can configure. User can do detail configuration on the right side of the side menu after clicking the related item.



### 4.2.3 Display Setting

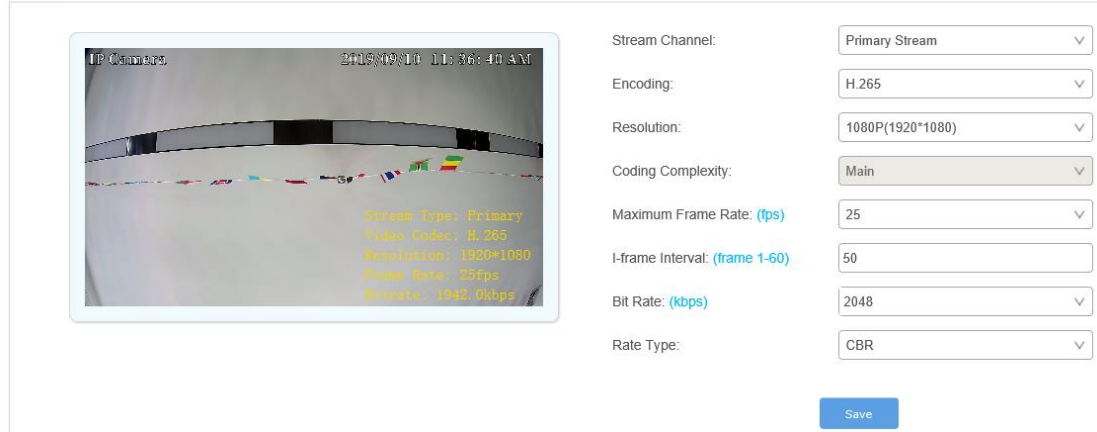
Support web video image adjustment, including Basic Settings, Day & Night Switch, OSD, Private Mask, ROI, etc.



### 4.2.4 Video Setting

Support video configuration, including Stream Type, Video Format, Resolution, Quality, Time, Bit Rate, CBR/VBR Type, etc.

Video

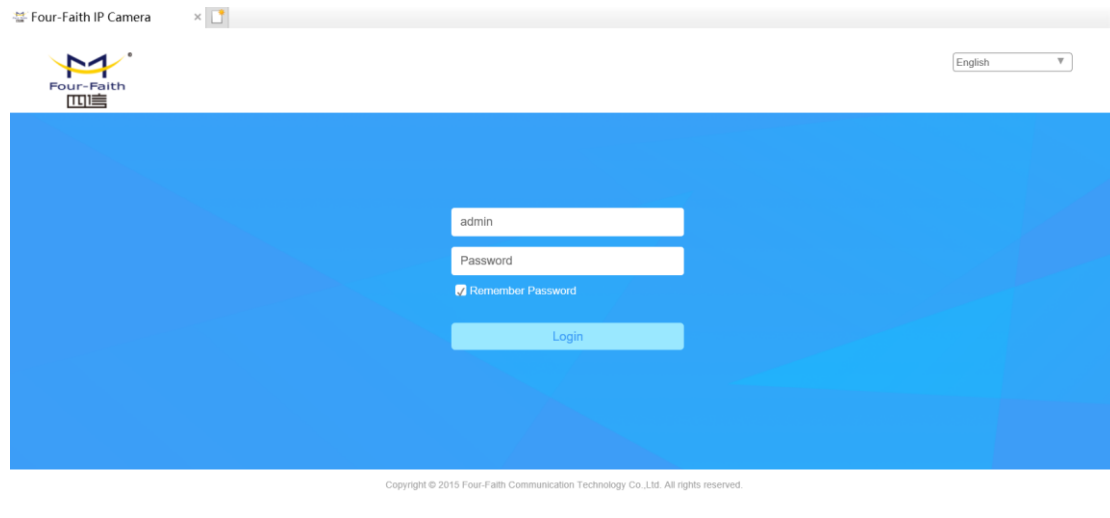


### 4.2.5 Real-time Video

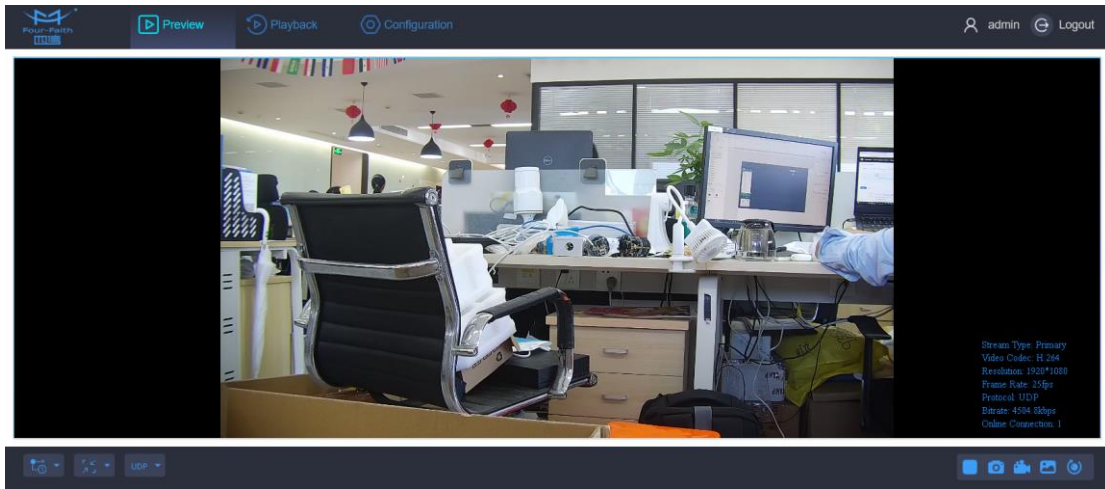
Real-time video is supported in IPC web interface and user can control the IPC remotely at the same time.

Processes:

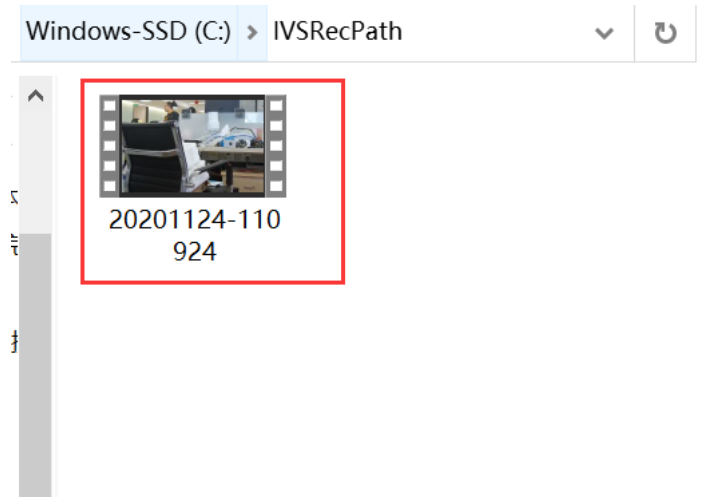
1. Login the IPC web interface.



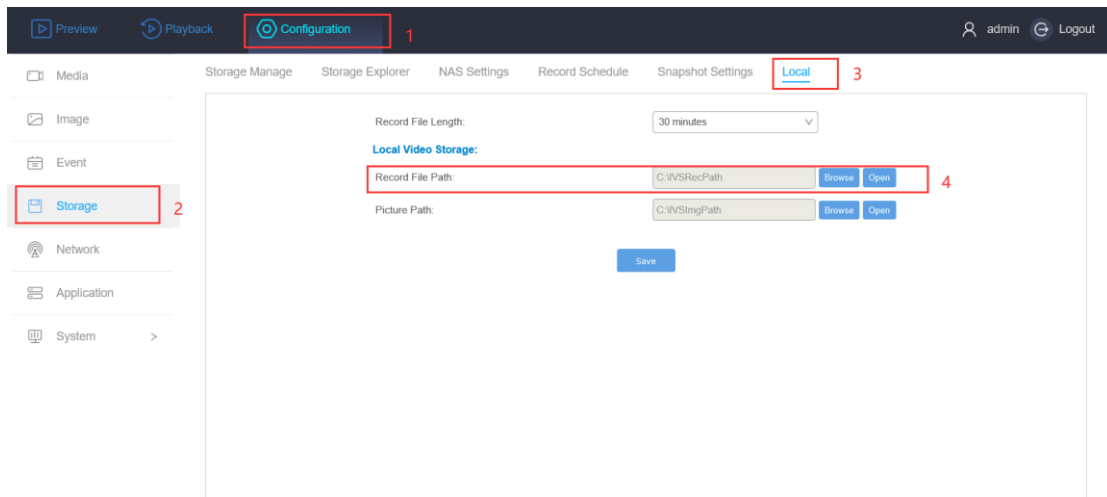
2. Click preview option on the top of the menu. At the lower right corner, user can remote control IPC such as play/stop live video, snapshots, video recording. Some cameras can support lens zoom, focus and other features.



3. On the video preview interface, the recording videos and snapshot are stored on the local disk. After finish record the video or snapshot, the system will automatically pop up the local disk window of the recording video/snapshot so that users can view it at the same time.

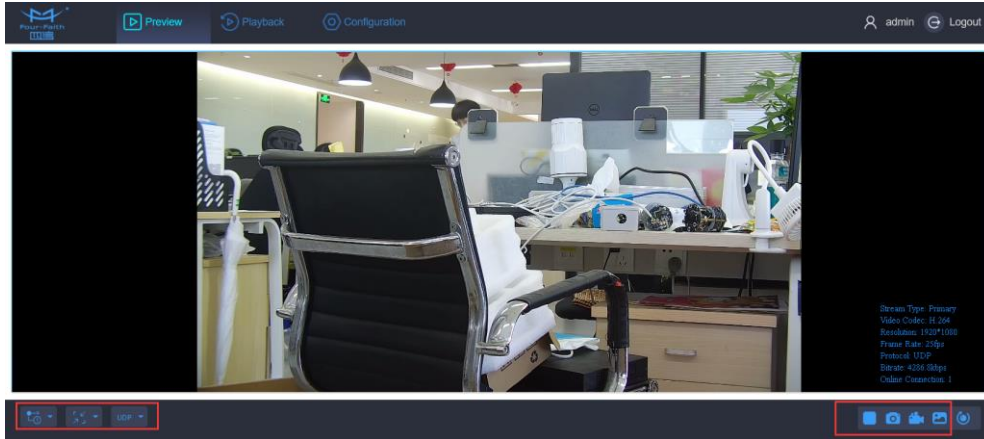


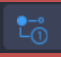



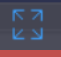
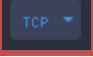










4. User can setting the record video storage path on the IPC web interface.



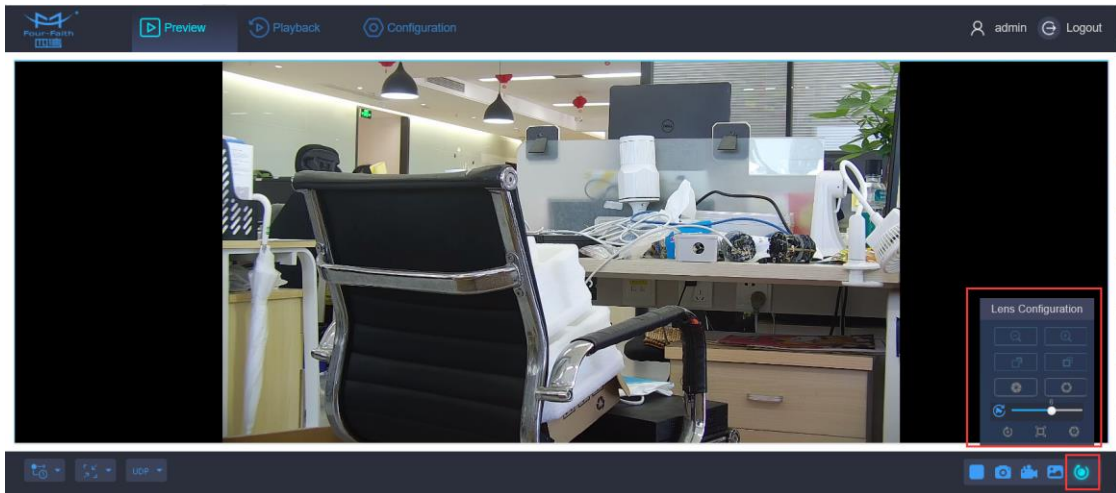




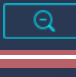








Buttons of image setting:



Button	Description
	Primary stream
	Secondary stream
	Window size
	Real size
	Full screen size
	Protocol setting
	Play
	Stop
	Snapshot
	Brightness
	Contrast
	Sharpness
	Noise reduction level
	Default
	Video recording
	Saturation

Buttons of IPC remote control:



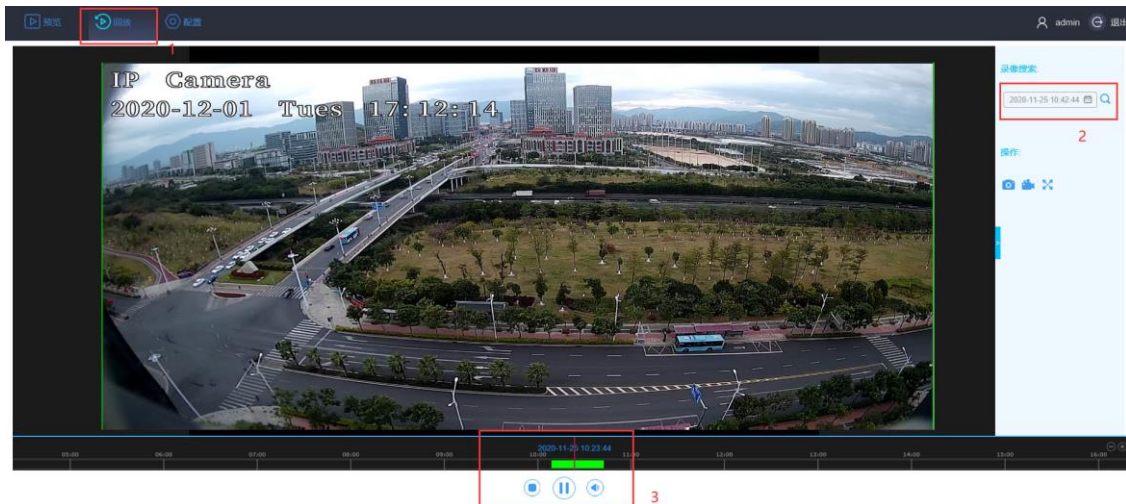
Button	Description
	Len configuration
	Zoom in
	Zoom out
	Focus increase
	Focus reduce
	Iris increase
	Iris reduce
	Focus speed
	Lens initialization
	Auxiliary focus
	Auto iris

### 4.2.6 Video Playback

The IPC web interface supports video playback function. User can use the IPC web interface to play the recorded video from the IPC storage directly. You may require to install plug-ins before you use this function.

Processes:

1. Click the playback on the top of menu.
2. Select the date and time on the right side.
3. Click the play button to playback the video.

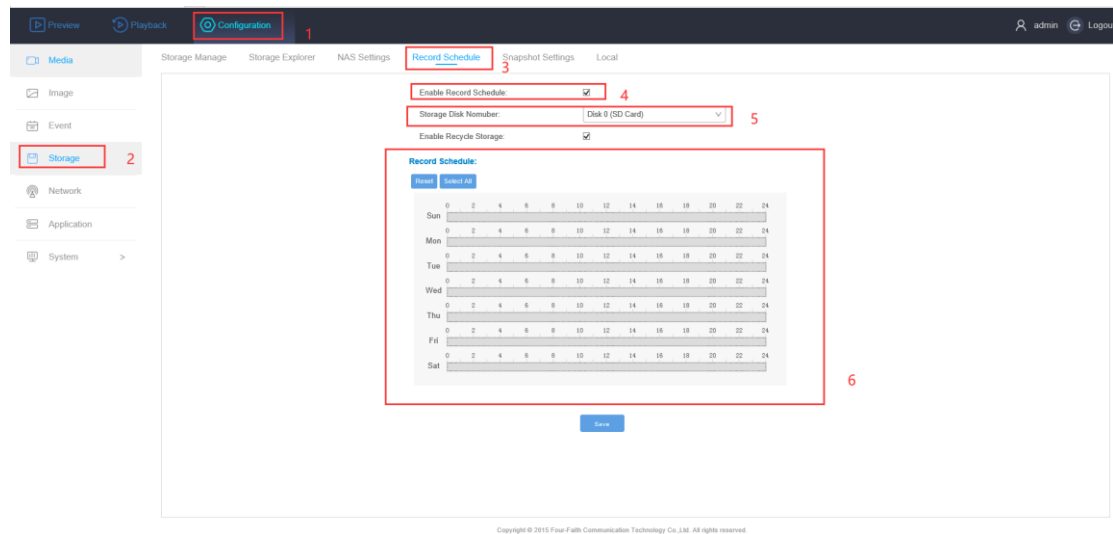


## 4.2.7 Video Record Schedule

User can set the recording schedule so that the IP camera can record automatically at regular intervals.

Processes:


1. Click the configuration on the top of menu.
2. Select the storage option on the left side.
3. Choose record schedule on the top.
4. Enable the record schedule.
5. Choose the disk.
6. Select the recording day & time period and save.



### 4.2.8 Alarm

The product supports various event alarm functions, by setting up some trigger conditions and the related actions to inform user to check and take action.

Motion Detection



IP Camera 2018/09/10 11:38:23 AM

Stream Type: Primary  
Video Codec: H.265  
Resolution: 1920\*1080  
Frame Rate: 25fps  
Bitrate: 3295.9kbps

Select All Clear All

Alarm Action > Associated Configuration > Schedule Settings

Enable:

Sensitivity:  Reset

Enable Alarm Record:

Enable Alarm Snapshot:

Storage Disk Number: Disk 0 (SD Card)

Upload Via SMTP:

Save

### 4.2.9 Storage Configuration

The product support storage management, storage configuration, file search, scheduled recording, scheduled image capture, etc.

Storage Manage Storage Explorer NAS Settings Record Schedule Snapshot Settings Local

<input type="checkbox"/>	Disk No.	Capacity	Remaining	Status	Type	Property
<input type="checkbox"/>	0	14.43G	4.43G	Normal	SD Card	WR

Current Disk 0 Information:

Image Capacity: 4.25G

Image Remaining Space: 4.23G

Record Capacity: 9.75G

Record Remaining Space: 0.20G

Capture Storage Percentage:  %

Record Storage Percentage:  %

Save Init

## 4.2.10 Network Configuration

[Port Settings](#)   [TCP/IP](#)   [HTTPS](#)   [SMTP](#)   [Cloud](#)

Http Port: (1-65535)	<input type="text" value="80"/>
Https Port: (1-65535)	<input type="text" value="443"/>
RTSP Port: (1-65535)	<input type="text" value="554"/>
<input type="button" value="Save"/>	

[Port Settings](#)   [TCP/IP](#)   [HTTPS](#)   [SMTP](#)   [Cloud](#)

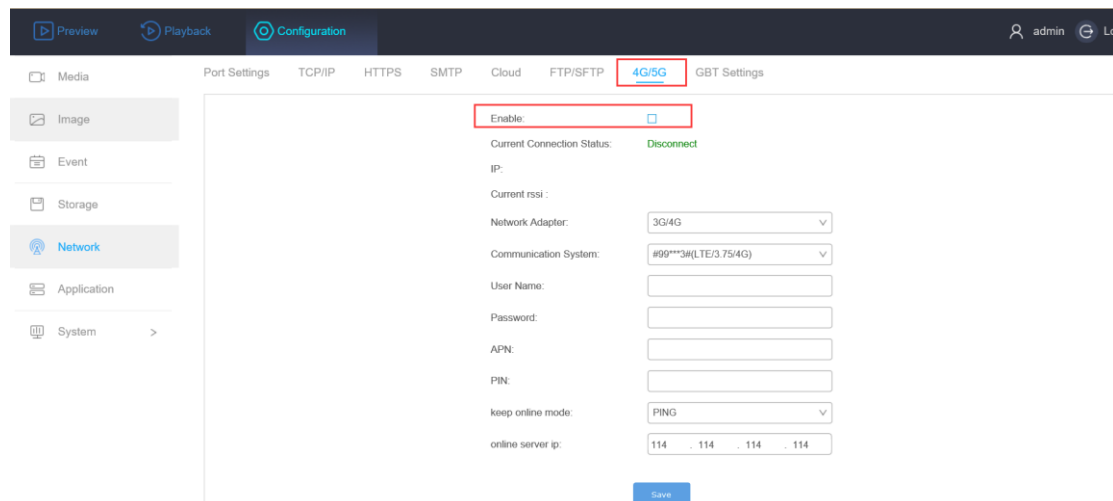
IPv4 Mode:	<input type="text" value="Fixed IP"/>
Device IP Address:	<input type="text" value="192 . 168 . 88 . 61"/> <input type="button" value="Test"/>
IPv4 Subnet Mask:	<input type="text" value="255 . 255 . 255 . 0"/>
IPv4 Default Gateway:	<input type="text" value="192 . 168 . 88 . 1"/>
DNS Server:	<input type="text" value="192 . 168 . 88 . 1"/>
<input type="button" value="Save"/>	

### 4.2.11 4G/5G Configuration

1. Insert the SIM card to the IPC. Click the 'Network' option on the left side of the IPC Web interface and choose 4G/5G on the top of the menu. Enable the 4G/5G

**Notice:**

1. Make sure the network state is connected, has an IP address and the signal value is above 15.
2. The network state is at least 4G or LTE.



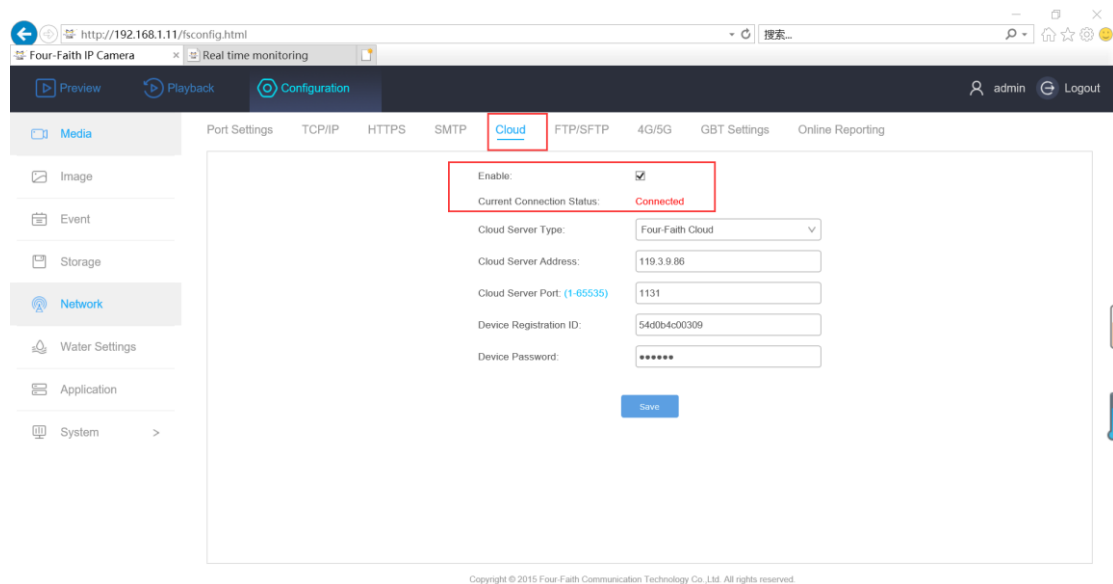
### 4.2.12 Cloud Platform Configuration

1. Click the 'Cloud' on the top of the menu, enable it and save. Check the status and copy the device registration ID. (The cloud server address and server port may change by the customer's local server and local port)

**Notice:**

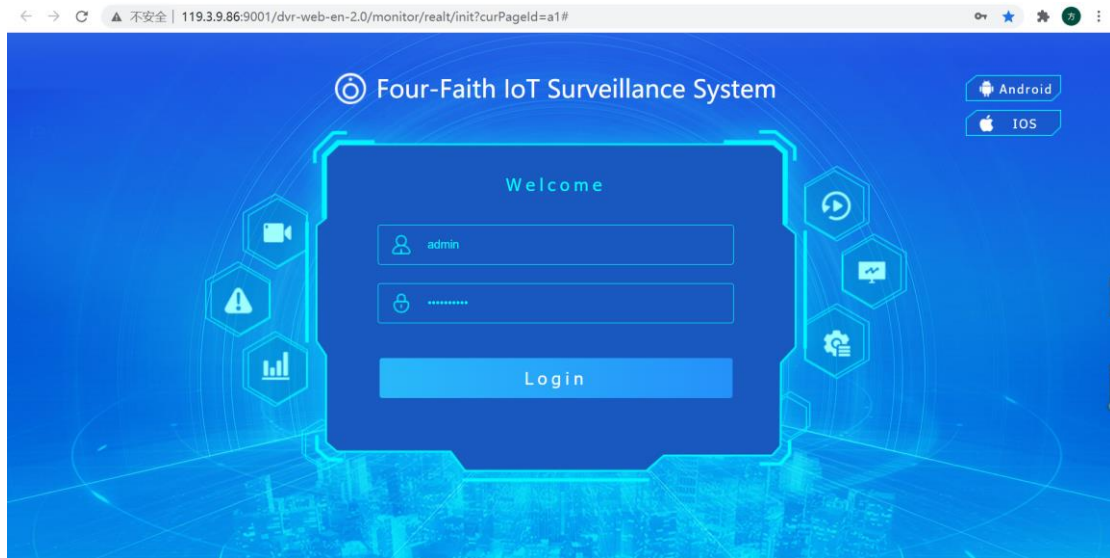
1, Make sure the server address and port are correct, customer could check with the technician.

2, Make sure that the device registration ID is the same as the ID newly added on the platform and that the capital and small letter must be the same.

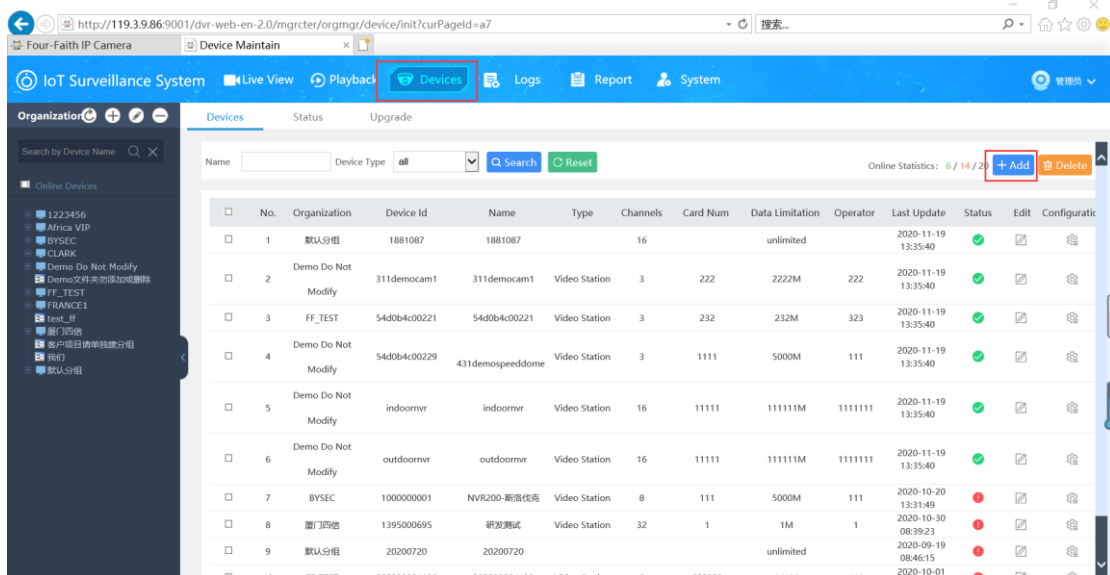




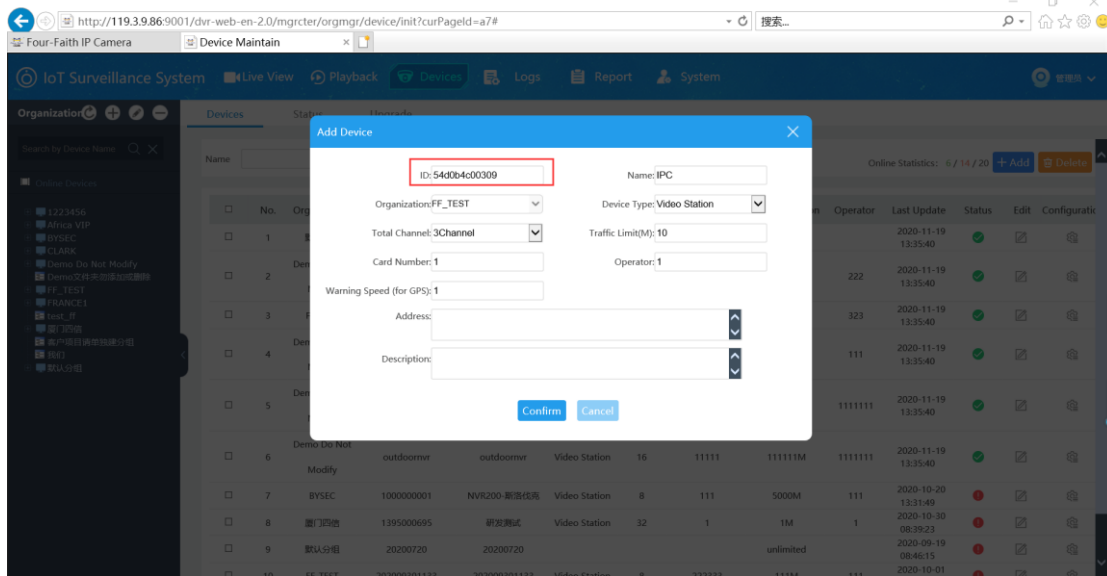
2. Enter the cloud server address on the IE and login to the Four-Faith Cloud Platform.



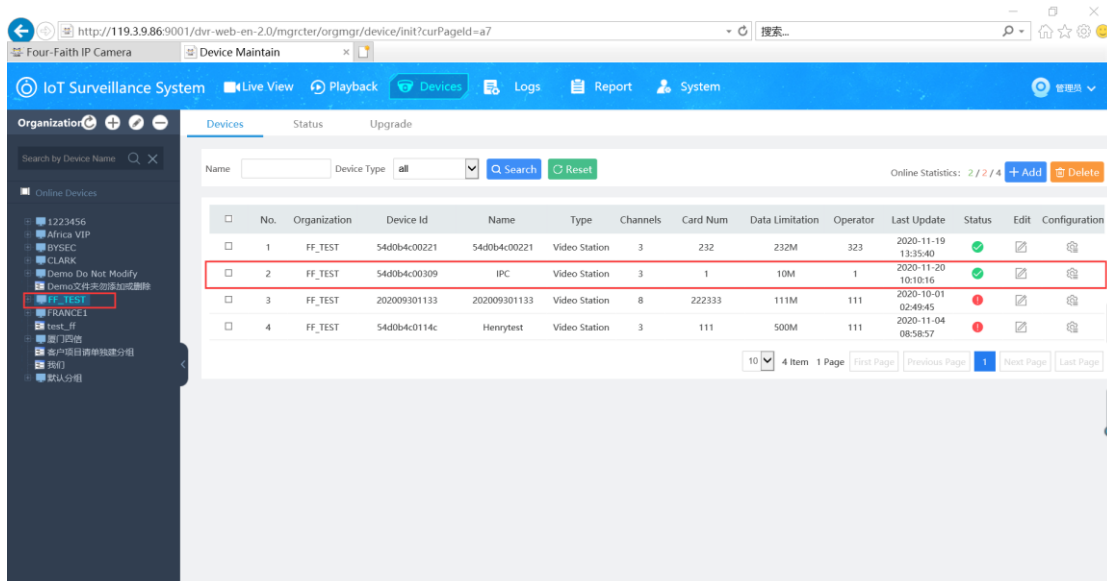
3. Click the device and choose add option for adding the IPC device to the Four-Faith Cloud Platform.



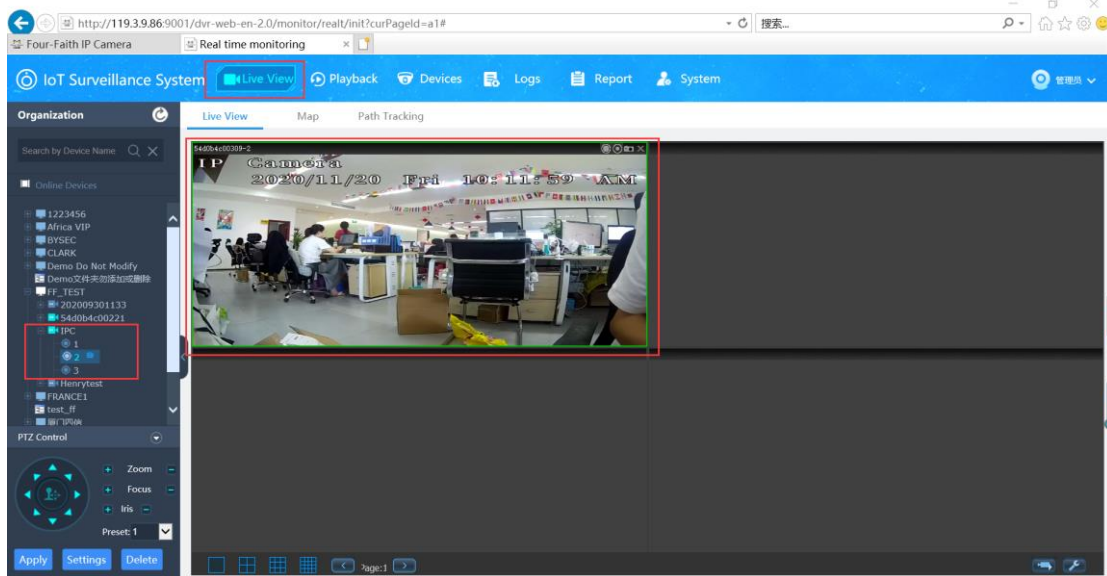
4. Paste the device registration ID that copy on the IPC Web interface. Select the organization, device type and total channel. Fill up the IPC information and click confirm.



5. Click the organization that select at the previous procedure on the left side and check the status.



6. Click the 'live view' on the top of the menu. Choose organization on the right side and select the IPC to watch the live stream video on the Four-Faith Cloud Management Platform.



### 4.2.13 SMTP

Port Settings   TCP/IP   HTTPS   SMTP   Cloud

**Sender Settings:**

Sender Email Address:

SMTP Server:

SMTP Port:

Encryption:

**Server Authentication:**

User Name:

Password:

**Recipients Address:**

Recipient Email Address1:

Recipient Email Address2:

Recipient Email Address3:

### 4.2.14 Device Upgrade

1. Remote Upgrade: Upload the new firmware through the cloud server API, click the upgrade button on the related web page. The cloud server will automatically send the firmware to the IPC to finish the upgrade. After the upgrade, it will return the result to the web server.
2. Local Upgrade: Select the new firmware from the local web portal, the web page will send the firmware to the IPC to finish the upgrade. After the upgrade, it will return the result to the page.

[System Maintenance](#)

<b>Version Information:</b>	
Software Version:	10.1.0.2-r4
Hardware Version:	V1.0
<b>System Operation:</b>	
Reboot the Device:	<input type="button" value="Reboot"/>
Device Parameter Reset: <i>(Keep the IP Configuration)</i>	<input type="button" value="Reset"/>
Factory Default:	<input type="button" value="Restore"/>
<b>Profile Operation:</b>	
Export Config File:	<input type="button" value="Export Config"/>
Import Config File:	<input type="button" value="Select File"/> <input type="text"/> <input type="button" value="Upload"/>
<b>Update Operation:</b>	
Firmware File:	<input type="button" value="Select File"/> <input type="text"/> <input type="button" value="Upgrade"/>
Reset after Upgrading:	<input type="checkbox"/>

Note: Please do not turn off the power, it will restart automatically after the upgrade is completed.

## 4.3 Video Coding

IPC system provides RTSP protocol to streaming video through network. By typing the RTSP address and port, verify the username and password, user will be able to watch the real-time video streaming on web page, VLC or network video players.

It also supports video streaming through cloud server or from APP. Contact your sales for cloud server license.