

Industrial Computer

F4932-R1Q



Introduction

F4932-R1Q is a low-power industrial computer independently developed by Four-Faith. It combines wireless cellular network and routing technology with industrial computer technology. The system uses Quad-core ARM Cortex-A17 RK3288 processor with a main frequency of 1.8GHz. Provide high-speed computing support for client task programs. Support OpenGL ES2.0 and OpenVG™ 1.1 hardware accelerator, full HD 1080P video codec engine, provide smooth and powerful video experience for multimedia playback. F4932-R1Q contains 4 USB, 2 RS232, 1 RS232/RS485, HDMI, network, audio and other forms of interfaces, and can be connected with scanners, printers, cameras, keyboards, mice, infrared screens, LCD screens and other equipment, No longer bothered by the lack of interfaces.



Industrial-grade Design

- ▶ Use high-performance components
- ▶ Wide power input (DC 9 ~ 24V)
- ▶ TF card and SIM card adopt anti-theft structure design
- ▶ Built-in Android 5.1 (standard) operating system
- ▶ Adopt 4-core S-terminal power interface. fasten and not fall off



Stability & Reliability

- ▶ WDT Watchdog design to ensure system stability
- ▶ Adopt a complete anti-drop mechanism
- ▶ Ethernet interface built-in 1.5KV electromagnetic isolation protection
- ▶ RS232/RS485 interface built-in 15KV ESD protection
- ▶ Built-in 15KV ESD protection for SIM/UIM card interface
- ▶ Antenna interface lightning protection (optional)



Standard & Convenience

- ▶ Power on to enter working state
- ▶ Support 10/100/1000Mbps Ethernet
- ▶ Provide 4 standard USB2.0 interfaces
- ▶ Provide multiple RS232 or RS485 DB9 interfaces
- ▶ Provide audio input and output interface

Industrial Computer F4932-R1Q



- ▶ Support 1080P video codec and 3D acceleration
- ▶ Local storage supports TF card (optional)
- ▶ Open Android environment, you can develop and install applications by yourself
- ▶ Support HDMI, LVDS (optional) external touch screen and other display devices
- ▶ Support 802.11 b/g/n WIFI network, and provide multiple encryption methods
- ▶ Provide rich external interfaces to meet customer application needs
- ▶ Support 3G/4G dial-up Internet
- ▶ Support APN/VPDN private network dial-up
- ▶ Supports intelligent online retention, disconnected re-connection, and abnormal recovery functions
- ▶ Provide PWR, SYS, ONLINE, WIFI and other indicators, which is more convenient to use and maintain
- ▶ Support NTP, built-in RTC, support timing restart, timing switch machine function
- ▶ Support multi LAN/WAN connection methods, including static IP, DHCP, 3G/4G and other methods
- ▶ Support 3G/4G network and wired LAN/WAN dual link intelligent switching backup function (optional)

Product Specification

Cellular Specification	
Items	Contents
Module	Industrial grade wireless module
Standard	Support TDD-LTE and FDD-LTE
Bandwidth	FDD LTE(DL 100Mbps, UL 50Mbps) TDD LTE(DL 61Mbps, UL18Mbps)
Power	< 24dBm
Sensitivity	<-109dBm

Industrial Computer F4932-R1Q



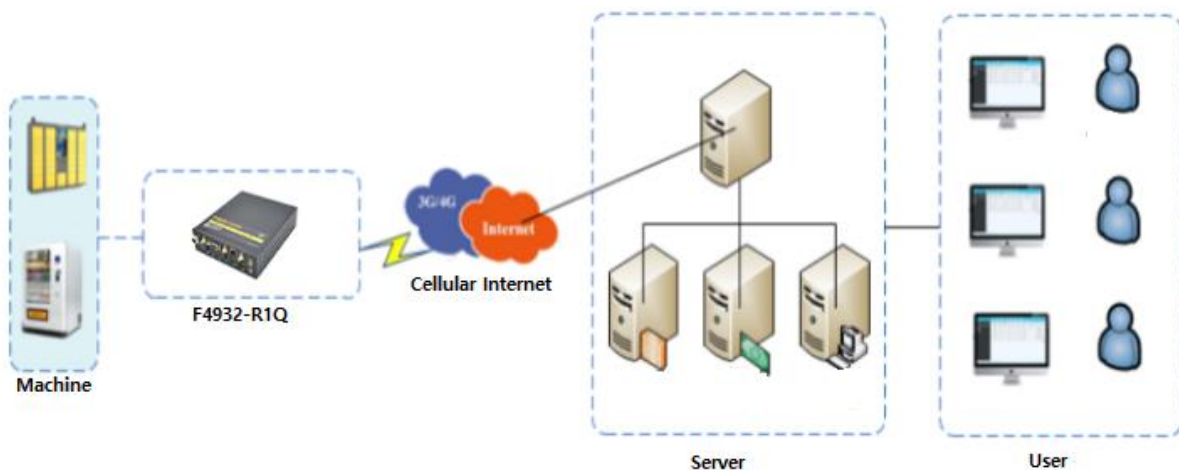
WIFI Specification	
Items	Contents
Standard	IEEE802.11b/g/n, 2.4G
Bandwidth	IEEE802.11b: 11Mbps IEEE802.11g: 54Mbps IEEE802.11n: 150Mbps
Encryption	WEP, WPA, WPA2
Power	15dBm
Sensitive	<-70dBm@54Mbps
Hardware System	
Items	Contents
CPU	Rockchip RK3288
FLASH	8GB eMMC
DDR3	2GB
TF Card	32GB (optional)
Interfaces	
Items	Contents
Ethernet	1 x 10/100/1000Mbps ETH (RJ45) , AUTO MDI/MDIX, 1.5KV Electromagnetic isolation protection
Serial	3 x RS232, 1 x RS485, 15KV ESD protection, DB9 terminal
Indicator	"PWR"、"SYS"、"Online"
SIM/UIM	1.8V/3V SIM/UIM card, 15KV ESD protection
USB	4 x USB2.0, 1 x USB2.0 OTG
TF card	Standard TF card interface
Audio	3.5mm audio interface
Display	HDMI: 1920x1080, 1366x768, 1280x720, 1024x768 LVDS: 1920x1080, 1366x768, 1280x720, 1024x768(optional)
Ethernet	1 x 10/100/1000Mbps ETH (RJ45) , AUTO MDI/MDIX, 1.5KV Electromagnetic isolation protection
Serial	3 x RS232, 1 x RS485, 15KV ESD protection, DB9 terminal
Power	Standard 4-pin S-terminal interface

Industrial Computer F4932-R1Q



Power Supply	
Items	Contents
Standard	DC 12V/1.5A
Range	DC 9 ~ 24V
Physical Properties	
Items	Contents
Shell	Metal shell, shockproof design
Size	170mm × 150mm × 27mm (Excluding antenna and mounting parts)
Weight	About 0.7Kg (Excluding antenna and mounting parts)
Others	
Items	Contents
Working Temp	-20 ~ +60°C
Storage Temp	-40 ~ +85°C
Humidity	95% (No condensation)

Topology



Industrial Computer F4932-R1Q



Dimension



Order Information

Models	Network	3G/4G Module	SIM/UIM
F4932-R1Q-FL	FDD-LTE	1	1
F4932-R1Q-L	TDD-LTE	1	1