

Smart AI Pressure Meter Reader

SMR100-PR



Product Introduction

The pressure meter reader, designed with a split structure, captures pressure meter data accurately through an efficient camera module. It relies on an embedded AI chip for high-precision metering and automatic fault detection. Supporting network transmission protocols such as 4G, NB-IoT, and WiFi, it seamlessly connects to cloud-based management platforms, Provides remote pressure monitoring and data analysis functions.



Powerful Functions

- ▶ Empowered by embedded chips, it efficiently extracts meter characteristics with an accuracy rate of 99%.
- ▶ Supports multiple wireless communication methods, suitable for diverse application scenarios such as industrial IoT and smart cities.
- ▶ Offers multiple data output formats to meet different network and compatibility requirements.



Stable and Reliable

- ▶ When network jitter causes transmission failure, a resume transmission mechanism is triggered.
- ▶ Overcomes brand and model limitations, compatible with most meters on the market.
- ▶ Battery-powered, extremely simple installation, with no need for shutdown or production stoppage.



Product Specifications

Parameter Type	Parameter Specifications
Product Dimensions	135mm * 95mm * 55mm
Total Weight	200g
Protection Level	IP67
Power Supply Mode	8500mAh lithium battery
Communication Network	Supports 4G Cat.1, NB-IoT, WiFi (select one)
Operating Current	Less than 160mA
Standby Current	Less than 5μA
Operating Temperature	-10°C to 55°C
Storage Temperature	-25°C to 70°C
Recognition Accuracy	Greater than 99.9%
Flammability Rating	UL94 - v0 grade
Electromagnetic Compatibility	E1 level

Communication Parameters		
4G Cat.1 *	Standards and Bands	LTE-FDD: B1/2/3/4/5/7/8/12/13/18/19/20/25/26/28 LTE-TDD:B38/39/40/41 WCDMA:B1/2/4/5/6/8/19 GSM:B2/B3/5/8

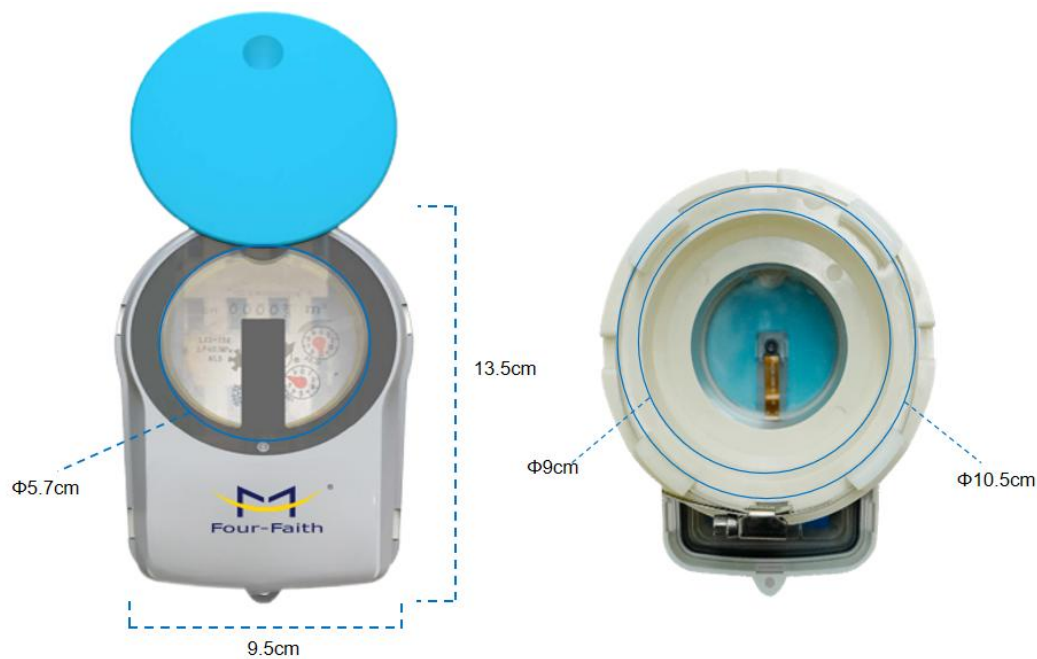
Smart AI Pressure Meter Reader



	Transmission Power	<23dBm
	Reception Sensitivity	<-97dBm
NB-IoT *	Standards and Bands	B1/ 2/ 3/ 4/ 5/ 8/ 12/ 13/ 17/ 18/ 19/ 20/ 25/ 28/ 66/ 70/ 85
	Transmission Power	<23dBm
	Reception Sensitivity	<-118.5dBm
WiFi	Standards and Bands	802.11b/g/n 2.4GHz
	Transmission Power	≤18.5dBm
	Reception Sensitivity	<-98dBm

For parameters marked with an asterisk (*), please contact the relevant sales representative if you have additional requirements.

Product Dimensions (mm)



Smart AI Pressure Meter Reader



Accessories

Name	Description
Adhesive	1 unit,default
Base	1 unit,default
Clips	4 unit,default
Hose clamp	1 unit,default

Order Information

Model Name	Description
SMR100-PRBA01-NB	Battery powered, supports communication modes NB, internal antenna
SMR100-PRBA01-4G	Battery powered, supports communication modes 4G, internal antenna
SMR100-PRBA01-WI	Battery powered, supports communication modes WiFi, internal antenna